

For Research Use Only

# GPR101-Specific Polyclonal antibody, PBS Only

Catalog Number:20074-1-PBS



## Basic Information

**Catalog Number:**

20074-1-PBS

**Size:**

100ug , Concentration: 1 mg/ml by  
Nanodrop;

**Source:**

Rabbit

**Isotype:**

IgG

**GenBank Accession Number:**

NM\_054021

**GeneID (NCBI):**

83550

**UNIPROT ID:**

Q96P66

**Full Name:**

G protein-coupled receptor 101

**Calculated MW:**

57 kDa

**Observed MW:**

57 kDa

**Purification Method:**

Antigen affinity purification

## Applications

**Tested Applications:**

WB, IHC, FC (Intra), Indirect ELISA

**Species Specificity:**

human, monkey

## Background Information

GPR101, also named as GPCR6, belongs to the G-protein coupled receptor 1 family. It is an orphan receptor. This antibody is specific to GPR101.

## Storage

**Storage:**

Store at -80°C.

**Storage Buffer:**

PBS only, pH7.3

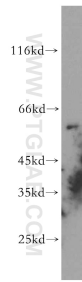
For technical support and original validation data for this product please contact:

T: 1 (888) 4PTGLAB (1-888-478-4522) (toll free  
in USA), or 1(312) 455-8498 (outside USA)

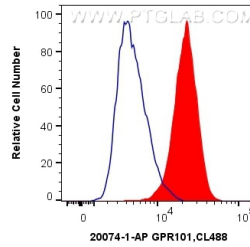
E: [proteintech@ptglab.com](mailto:proteintech@ptglab.com)  
W: [ptglab.com](http://ptglab.com)

This product is exclusively available under Proteintech Group brand and is not available to purchase from any other manufacturer.

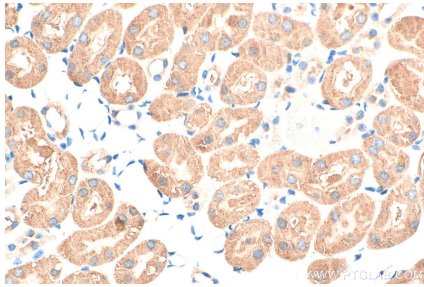
## Selected Validation Data



HEK-293 cells were subjected to SDS PAGE followed by western blot with 20074-1-AP (GPR101-Specific antibody) at dilution of 1:300 incubated at room temperature for 1.5 hours. This data was developed using the same antibody clone with 20074-1-PBS in a different storage buffer formulation.



$1 \times 10^6$  HEK-293 cells were intracellularly stained with 0.2 ug Anti-Human GPR101-Specific (20074-1-AP) and CoraLite® 488-Conjugated AffiniPure Goat Anti-Rabbit IgG(H+L) at dilution 1:1000 (red), or 0.2 ug Control Antibody. Cells were fixed with 4% PFA and permeabilized with Flow Cytometry Perm Buffer (PF00011-C). This data was developed using the same antibody clone with 20074-1-PBS in a different storage buffer formulation.



Immunohistochemical analysis of paraffin-embedded mouse kidney tissue slide using 20074-1-AP (GPR101-Specific antibody) at dilution of 1:1000 (under 40x lens). Heat mediated antigen retrieval with Tris-EDTA buffer (pH 9.0). This data was developed using the same antibody clone with 20074-1-PBS in a different storage buffer formulation.

Immunohistochemical analysis of paraffin-embedded mouse kidney tissue slide using 20074-1-AP (GPR101-Specific antibody) at dilution of 1:1000 (under 10x lens). Heat mediated antigen retrieval with Tris-EDTA buffer (pH 9.0). This data was developed using the same antibody clone with 20074-1-PBS in a different storage buffer formulation.