

For Research Use Only

# GPR123-Specific Polyclonal antibody

Catalog Number: 20075-1-AP



## Basic Information

Catalog Number:

20075-1-AP

Size:

150ul, Concentration: 550 ug/ml by Nanodrop and 393 ug/ml by Bradford method using BSA as the standard;

Source:

Rabbit

Isotype:

IgG

GenBank Accession Number:

NM\_001083909

GeneID (NCBI):

84435

UNIPROT ID:

Q86SQ6

Full Name:

G protein-coupled receptor 123

Calculated MW:

61 kDa

Purification Method:

Antigen affinity purification

Recommended Dilutions:

IHC 1:20-1:200

## Applications

Tested Applications:

IHC, ELISA

Species Specificity:

human

Positive Controls:

IHC : human testis tissue,

**Note-IHC: suggested antigen retrieval with TE buffer pH 9.0; (\*) Alternatively, antigen retrieval may be performed with citrate buffer pH 6.0**

## Background Information

GPR123, also named as KIAA1828, FLJ25875 and FLJ37356, belongs to the G-protein coupled receptor 2 family and LN-TM7 subfamily. It is an orphan receptor. The antibody is specific to GPR123.

## Storage

Storage:

Store at -20°C. Stable for one year after shipment.

Storage Buffer:

PBS with 0.02% sodium azide and 50% glycerol pH 7.3.

Aliquoting is unnecessary for -20°C storage

\*\*\* 20ul sizes contain 0.1% BSA

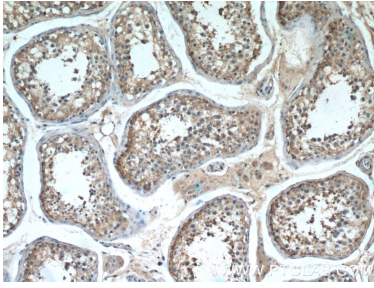
For technical support and original validation data for this product please contact:

T: 1 (888) 4PTGLAB (1-888-478-4522) (toll free in USA), or 1(312) 455-8498 (outside USA)

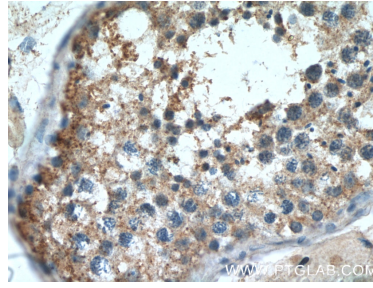
E: [proteintech@ptglab.com](mailto:proteintech@ptglab.com)  
W: [ptglab.com](http://ptglab.com)

This product is exclusively available under Proteintech Group brand and is not available to purchase from any other manufacturer.

## Selected Validation Data



Immunohistochemical analysis of paraffin-embedded human testis tissue slide using 20075-1-AP (GPR123-Specific Antibody) at dilution of 1:50 (under 10x lens).



Immunohistochemical analysis of paraffin-embedded human testis tissue slide using 20075-1-AP (GPR123-Specific Antibody) at dilution of 1:50 (under 40x lens).