

For Research Use Only

MYSM1-Specific Polyclonal antibody, PBS Only

Catalog Number: 20078-1-PBS

Featured Product



Basic Information

Catalog Number:

20078-1-PBS

Size:

100ug, Concentration: 1 mg/ml by
Nanodrop;

Source:

Rabbit

Isotype:

IgG

GenBank Accession Number:

NM_001085487

GeneID (NCBI):

114803

UNIPROT ID:

Q5VVJ2

Full Name:

Myb-like, SWIRM and MPN domains 1

Calculated MW:

95 kDa

Observed MW:

81 kDa

Purification Method:

Antigen affinity purification

Applications

Tested Applications:

WB, IHC, IF/ICC, IP, Indirect ELISA

Species Specificity:

human, mouse, rat

Background Information

MYSM1, also named as KIAA1915, belongs to the peptidase M67A family and MYSM1 subfamily. MYSM1 is a metalloprotease that specifically deubiquitinates monoubiquitinated histone H2A, a specific tag for epigenetic transcriptional repression, thereby acting as a coactivator. Deubiquitination of histone H2A leads to facilitate the phosphorylation and dissociation of histone H1 from the nucleosome. MYSM1 acts as a coactivator by participating in the initiation and elongation steps of androgen receptor (AR)-induced gene activation. It catalyzes the reaction: Ubiquitin C-terminal thioester + H₂O = ubiquitin + a thiol. MYSM1 is a marker of cancer. The antibody is specific to MYSM1.

Storage

Storage:

Store at -80°C.

Storage Buffer:

PBS Only

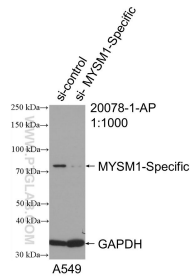
For technical support and original validation data for this product please contact:

T: 1 (888) 4PTGLAB (1-888-478-4522) (toll free
in USA), or 1(312) 455-8498 (outside USA)

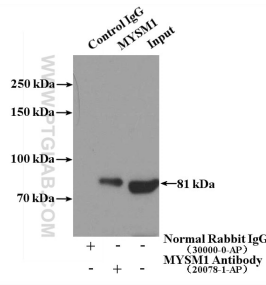
E: proteintech@ptglab.com
W: ptglab.com

This product is exclusively available under Proteintech Group brand and is not available to purchase from any other manufacturer.

Selected Validation Data

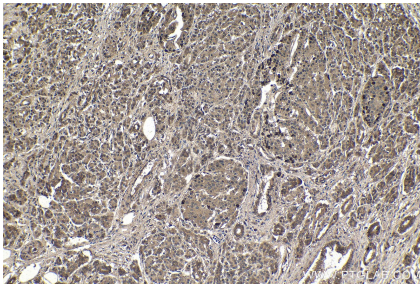


WB result of MYSM1-Specific antibody (20078-1-AP; 1:1000; incubated at room temperature for 1.5 hours) with sh-Control and sh-MYSM1-Specific transfected A549 cells. This data was developed using the same antibody clone with 20078-1-PBS in a different storage buffer formulation.

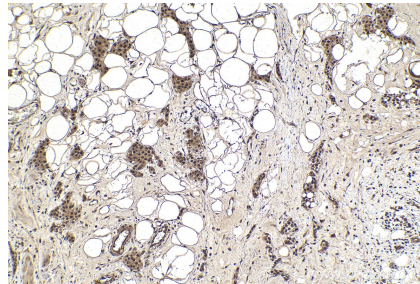


IP result of anti-MYSM1-Specific (IP:20078-1-AP, 4ug; Detection:20078-1-AP 1:300) with HeLa cells lysate 3200ug. This data was developed using the same antibody clone with 20078-1-PBS in a different storage buffer formulation.

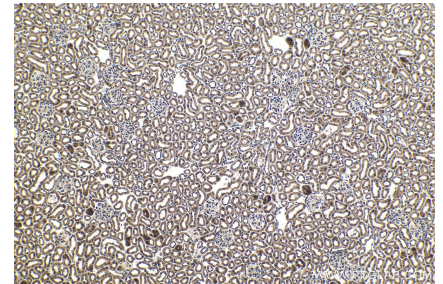
IP result of anti-MYSM1-Specific (IP:20078-1-AP, 4ug; Detection:20078-1-AP 1:1000) with HeLa cells lysate 1200 ug. This data was developed using the same antibody clone with 20078-1-PBS in a different storage buffer formulation.



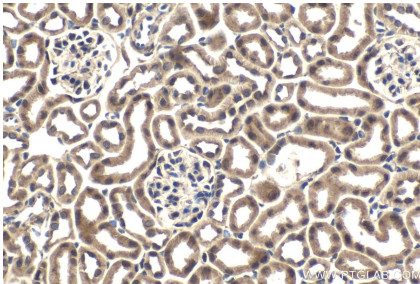
Immunohistochemical analysis of paraffin-embedded human pancreas cancer tissue slide using 20078-1-AP (MYSM1-Specific antibody) at dilution of 1:1000 (under 10x lens). Heat mediated antigen retrieval with Tris-EDTA buffer (pH 9.0). This data was developed using the same antibody clone with 20078-1-PBS in a different storage buffer formulation.



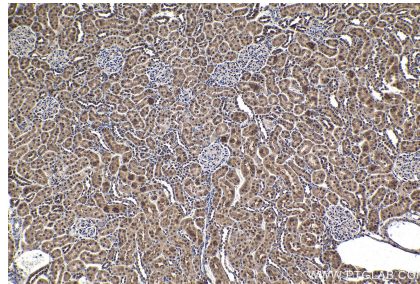
Immunohistochemical analysis of paraffin-embedded human urothelial carcinoma tissue slide using 20078-1-AP (MYSM1-Specific antibody) at dilution of 1:1000 (under 10x lens). Heat mediated antigen retrieval with Tris-EDTA buffer (pH 9.0). This data was developed using the same antibody clone with 20078-1-PBS in a different storage buffer formulation.



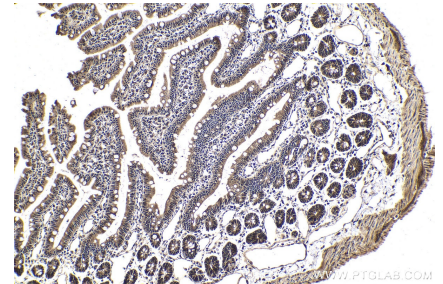
Immunohistochemical analysis of paraffin-embedded mouse kidney tissue slide using 20078-1-AP (MYSM1-Specific antibody) at dilution of 1:1000 (under 10x lens). Heat mediated antigen retrieval with Tris-EDTA buffer (pH 9.0). This data was developed using the same antibody clone with 20078-1-PBS in a different storage buffer formulation.



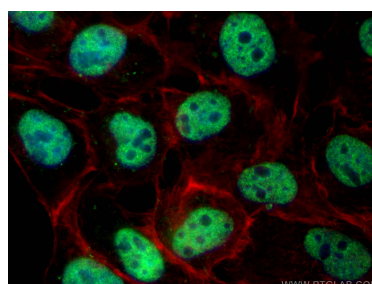
Immunohistochemical analysis of paraffin-embedded mouse kidney tissue slide using 20078-1-AP (MYSM1-Specific antibody) at dilution of 1:1000 (under 40x lens). Heat mediated antigen retrieval with Tris-EDTA buffer (pH 9.0). This data was developed using the same antibody clone with 20078-1-PBS in a different storage buffer formulation.



Immunohistochemical analysis of paraffin-embedded rat kidney tissue slide using 20078-1-AP (MYSM1-Specific antibody) at dilution of 1:1000 (under 10x lens). Heat mediated antigen retrieval with Tris-EDTA buffer (pH 9.0). This data was developed using the same antibody clone with 20078-1-PBS in a different storage buffer formulation.



Immunohistochemical analysis of paraffin-embedded rat small intestine tissue slide using 20078-1-AP (MYSM1-Specific antibody) at dilution of 1:1000 (under 10x lens). Heat mediated antigen retrieval with Tris-EDTA buffer (pH 9.0). This data was developed using the same antibody clone with 20078-1-PBS in a different storage buffer formulation.



Immunohistochemical analysis of paraffin-embedded mouse small intestine tissue slide using 20078-1-AP (MYSM1-Specific antibody) at dilution of 1:1000 (under 10x lens). Heat mediated antigen retrieval with Tris-EDTA buffer (pH 9.0). This data was developed using the same antibody clone with 20078-1-PBS in a different storage buffer formulation.

Immunofluorescent analysis of (4% PFA) fixed A431 cells using MYSM1-Specific antibody (20078-1-AP) at dilution of 1:400 and CoraLite® 488-Conjugated AffiniPure Goat Anti-Rabbit IgG(H+L) (SA00013-2), CL594-phalloidin (red). This data was developed using the same antibody clone with 20078-1-PBS in a different storage buffer formulation.