

For Research Use Only

MAS1L Polyclonal antibody

Catalog Number: 20080-1-AP

Featured Product

21 Publications



Basic Information

Catalog Number:

20080-1-AP

Size:

150ul, Concentration: 300 ug/ml by Nanodrop and 300 ug/ml by Bradford method using BSA as the standard;

Source:

Rabbit

Isotype:

IgG

GenBank Accession Number:

NM_052967

GeneID (NCBI):

116511

UNIPROT ID:

P35410

Full Name:

MAS1 oncogene-like

Calculated MW:

42 kDa

Observed MW:

42 kDa

Purification Method:

Antigen affinity purification

Recommended Dilutions:

WB 1:1000-1:4000

IF/ICC 1:10-1:100

Applications

Tested Applications:

WB, IF/ICC, ELISA

Cited Applications:

WB, IHC, IF

Species Specificity:

human

Cited Species:

human, rat

Positive Controls:

WB : HEK-293 cells, COLO 320 cells, HeLa cells, HepG2 cells

IF/ICC : HepG2 cells,

Background Information

MAS1L, also named as MRG, belongs to the G-protein coupled receptor 1 family and Mas subfamily. The antibody is specific to MAS1L.

Notable Publications

Author	Pubmed ID	Journal	Application
Jing-Chao Su	36193122	Evid Based Complement Alternat Med	WB, IHC
Hang Pan	34045880	J Inflamm Res	WB
Peipei Feng	32184813	Neural Plast	WB

Storage

Storage:

Store at -20°C. Stable for one year after shipment.

Storage Buffer:

PBS with 0.02% sodium azide and 50% glycerol pH 7.3.

Aliquoting is unnecessary for -20°C storage

*** 20ul sizes contain 0.1% BSA

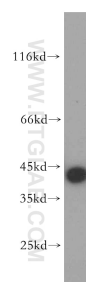
For technical support and original validation data for this product please contact:

T: 1 (888) 4PTGLAB (1-888-478-4522) (toll free in USA), or 1(312) 455-8498 (outside USA)

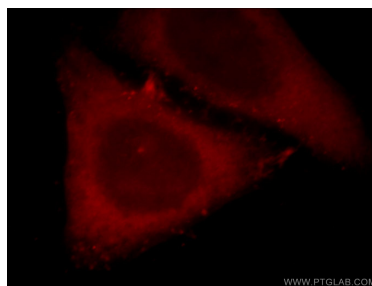
E: proteintech@ptglab.com
W: ptglab.com

This product is exclusively available under Proteintech Group brand and is not available to purchase from any other manufacturer.

Selected Validation Data



HEK-293 cells were subjected to SDS PAGE followed by western blot with 20080-1-AP (MAS1L-Specific antibody) at dilution of 1:500 incubated at room temperature for 1.5 hours.



Immunofluorescent analysis of HepG2 cells, using MAS1L antibody 20080-1-AP at 1:25 dilution and Rhodamine-labeled goat anti-rabbit IgG (red).