

For Research Use Only

MAS1L Polyclonal antibody, PBS Only

Catalog Number: 20080-1-PBS

Featured Product



Basic Information

Catalog Number:

20080-1-PBS

Size:

100ug, Concentration: 1 mg/ml by Nanodrop;

Source:

Rabbit

Isotype:

IgG

GenBank Accession Number:

NM_052967

GeneID (NCBI):

116511

UNIPROT ID:

P35410

Full Name:

MAS1 oncogene-like

Calculated MW:

42 kDa

Observed MW:

42 kDa

Purification Method:

Antigen affinity purification

Applications

Tested Applications:

WB, IF/ICC, Indirect ELISA

Species Specificity:

human

Background Information

MAS1L, also named as MRG, belongs to the G-protein coupled receptor 1 family and Mas subfamily. The antibody is specific to MAS1L.

Storage

Storage:

Store at -80°C.

Storage Buffer:

PBS Only

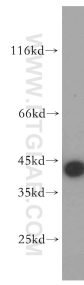
For technical support and original validation data for this product please contact:

T: 1 (888) 4PTGLAB (1-888-478-4522) (toll free in USA), or 1(312) 455-8498 (outside USA)

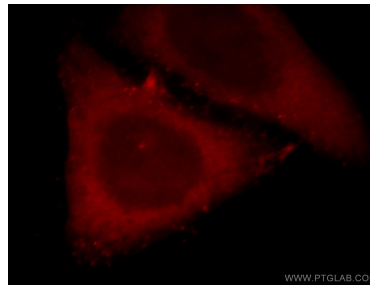
E: proteintech@ptglab.com
W: ptglab.com

This product is exclusively available under Proteintech Group brand and is not available to purchase from any other manufacturer.

Selected Validation Data



HEK-293 cells were subjected to SDS PAGE followed by western blot with 20080-1-AP (MAS1L-Specific antibody) at dilution of 1:500 incubated at room temperature for 1.5 hours. This data was developed using the same antibody clone with 20080-1-PBS in a different storage buffer formulation.



Immunofluorescent analysis of HepG2 cells, using MAS1L antibody 20080-1-AP at 1:25 dilution and Rhodamine-labeled goat anti-rabbit IgG (red). This data was developed using the same antibody clone with 20080-1-PBS in a different storage buffer formulation.