

For Research Use Only

CPXM2-Specific Polyclonal antibody

Catalog Number: 20082-1-AP



Basic Information

Catalog Number:

20082-1-AP

Size:

150ul , Concentration: 133 µg/ml by Bradford method using BSA as the standard;

Source:

Rabbit

Isotype:

IgG

GenBank Accession Number:

NM_198148

GeneID (NCBI):

119587

UNIPROT ID:

Q8N436

Full Name:

carboxypeptidase X (M14 family), member 2

Calculated MW:

86 kDa

Observed MW:

86 kDa

Purification Method:

Antigen affinity purification

Applications

Tested Applications:

WB, ELISA

Species Specificity:

human, mouse

Storage

Storage:

Store at -20°C. Stable for one year after shipment.

Storage Buffer:

PBS with 0.02% sodium azide and 50% glycerol pH 7.3.

Aliquoting is unnecessary for -20°C storage

*** 20ul sizes contain 0.1% BSA

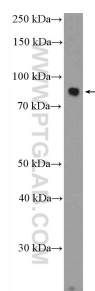
For technical support and original validation data for this product please contact:

T: 1 (888) 4PTGLAB (1-888-478-4522) (toll free in USA), or 1(312) 455-8498 (outside USA)

E: proteintech@ptglab.com
W: ptglab.com

This product is exclusively available under Proteintech Group brand and is not available to purchase from any other manufacturer.

Selected Validation Data



mouse kidney tissue were subjected to SDS PAGE followed by western blot with 20082-1-AP (CPXM2-Specific Antibody) at dilution of 1:300 incubated at room temperature for 1.5 hours.