

For Research Use Only

# GAB3-Specific Polyclonal antibody

Catalog Number: 20089-1-AP



## Basic Information

### Catalog Number:

20089-1-AP

### Size:

150ul, Concentration: 600 ug/ml by Nanodrop and 233 ug/ml by Bradford method using BSA as the standard;

### Source:

Rabbit

### Isotype:

IgG

### GenBank Accession Number:

NM\_001081573

### GeneID (NCBI):

139716

### UNIPROT ID:

Q8WWW8

### Full Name:

GRB2-associated binding protein 3

### Calculated MW:

66 kDa

### Observed MW:

60-66 kDa

### Purification Method:

Antigen affinity purification

### Recommended Dilutions:

WB 1:500-1:1000

IP 0.5-4.0 ug for 1.0-3.0 mg of total protein lysate

IHC 1:50-1:500

IF/ICC 1:50-1:500

## Applications

### Tested Applications:

WB, IHC, IF/ICC, IP, ELISA

### Species Specificity:

human, mouse, rat

**Note-IHC: suggested antigen retrieval with TE buffer pH 9.0; (\*) Alternatively, antigen retrieval may be performed with citrate buffer pH 6.0**

### Positive Controls:

WB : mouse brain tissue, HepG2 cells, MCF-7 cells

IP : MCF-7 cells,

IHC : human liver cancer tissue,

IF/ICC : MCF-7 cells,

## Background Information

GAB3 belongs to the GAB family. GAB3 interacts with PIK3R/p85, SHP2 and GRAP2/MONA. It may interact with Grb2. The antibody is specific to GAB3.

## Storage

### Storage:

Store at -20°C. Stable for one year after shipment.

### Storage Buffer:

PBS with 0.02% sodium azide and 50% glycerol pH 7.3.

Aliquoting is unnecessary for -20°C storage

\*\*\* 20ul sizes contain 0.1% BSA

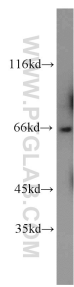
For technical support and original validation data for this product please contact:

T: 1 (888) 4PTGLAB (1-888-478-4522) (toll free in USA), or 1(312) 455-8498 (outside USA)

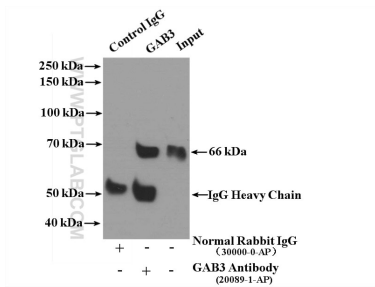
E: [proteintech@ptglab.com](mailto:proteintech@ptglab.com)  
W: [ptglab.com](http://ptglab.com)

This product is exclusively available under Proteintech Group brand and is not available to purchase from any other manufacturer.

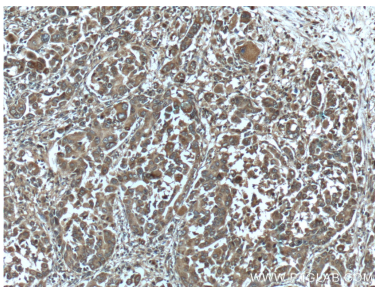
Selected Validation Data



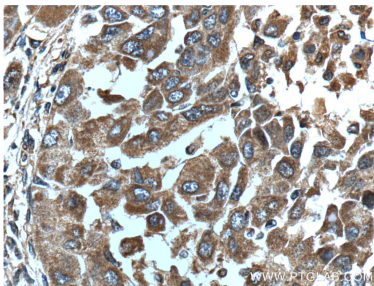
mouse brain tissue were subjected to SDS PAGE followed by western blot with 20089-1-AP (GAB3-Specific antibody) at dilution of 1:500 incubated at room temperature for 1.5 hours.



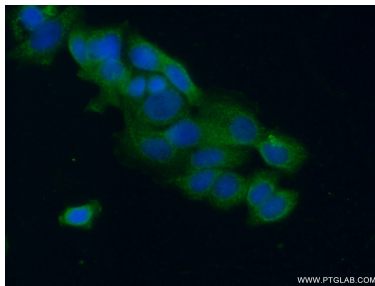
IP result of anti-GAB3-Specific (IP:20089-1-AP, 4ug; Detection:20089-1-AP 1:2000) with MCF-7 cells lysate 3200ug.



Immunohistochemical analysis of paraffin-embedded human liver cancer tissue slide using 20089-1-AP (GAB3-Specific Antibody) at dilution of 1:200 (under 10x lens).



Immunohistochemical analysis of paraffin-embedded human liver cancer tissue slide using 20089-1-AP (GAB3-Specific Antibody) at dilution of 1:200 (under 40x lens).



Immunofluorescent analysis of (-20°C Ethanol) fixed MCF-7 cells using 20089-1-AP (GAB3-Specific antibody) at dilution of 1:50 and Alexa Fluor 488-conjugated Goat Anti-Rabbit IgG(H+L).