

For Research Use Only

# RIMS1-Specific Polyclonal antibody

Catalog Number: 20092-1-AP



## Basic Information

<b>Catalog Number:</b> 20092-1-AP	<b>GenBank Accession Number:</b> NM_014989	<b>Purification Method:</b> Antigen affinity purification
<b>Size:</b> 150ul , Concentration: 133 µg/ml by Bradford method using BSA as the standard;	<b>GeneID (NCBI):</b> 22999	
<b>Source:</b> Rabbit	<b>Full Name:</b> regulating synaptic membrane exocytosis 1	
<b>Isotype:</b> IgG	<b>Calculated MW:</b> 189 kDa	

## Applications

**Tested Applications:**  
IHC, ELISA

**Species Specificity:**  
human

## Background Information

RIMS1, also named as KIAA0340, RAB3IP2 and RIM1, is a rab effector involved in exocytosis. It may act as scaffold protein that regulates neurotransmitter release at the active zone. It is essential for maintaining normal probability of neurotransmitter release and for regulating release during short-term synaptic plasticity. Defects in RIMS1 may be a cause of cone-rod dystrophy type 7 (CORD7). This antibody is specific to RIMS1.

## Storage

**Storage:**  
Store at -20°C. Stable for one year after shipment.

**Storage Buffer:**  
PBS with 0.02% sodium azide and 50% glycerol pH 7.3.

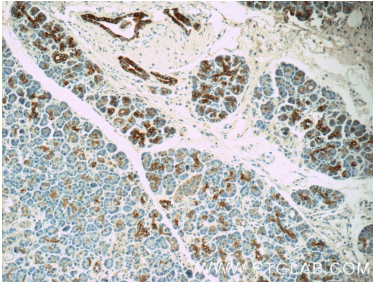
Aliquoting is unnecessary for -20°C storage

\*\*\* 20ul sizes contain 0.1% BSA

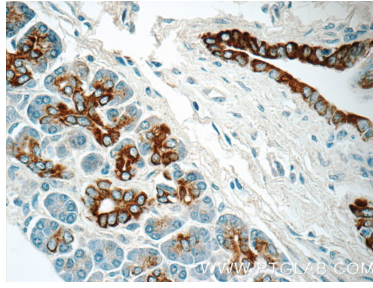
For technical support and original validation data for this product please contact:  
T: 1 (888) 4PTGLAB (1-888-478-4522) (toll free in USA), or 1(312) 455-8498 (outside USA) E: proteintech@ptglab.com W: ptglab.com

This product is exclusively available under Proteintech Group brand and is not available to purchase from any other manufacturer.

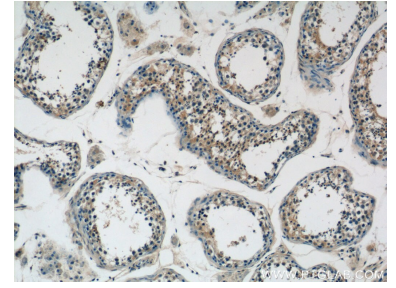
## Selected Validation Data



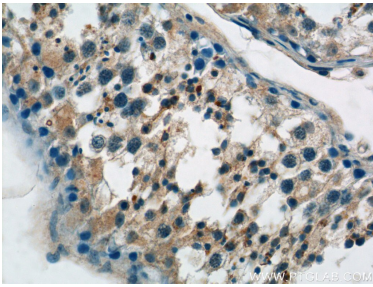
Immunohistochemical analysis of paraffin-embedded human pancreas tissue slide using 20092-1-AP (RIMS1-Specific Antibody) at dilution of 1:50 (under 10x lens).



Immunohistochemical analysis of paraffin-embedded human pancreas tissue slide using 20092-1-AP (RIMS1-Specific Antibody) at dilution of 1:50 (under 40x lens).



Immunohistochemical analysis of paraffin-embedded human testis tissue slide using 20092-1-AP (RIMS1-Specific Antibody) at dilution of 1:50 (under 10x lens).



Immunohistochemical analysis of paraffin-embedded human testis tissue slide using 20092-1-AP (RIMS1-Specific Antibody) at dilution of 1:50 (under 40x lens).