

For Research Use Only

ZNF600-Specific Polyclonal antibody

Catalog Number: 20100-1-AP



Basic Information

Catalog Number:

20100-1-AP

Size:

150ul , Concentration: 700 ug/ml by Nanodrop and 367 ug/ml by Bradford method using BSA as the standard;

Source:

Rabbit

Isotype:

IgG

GenBank Accession Number:

NM_198457

GeneID (NCBI):

162966

UNIPROT ID:

Q6ZNG1

Full Name:

zinc finger protein 600

Calculated MW:

83 kDa

Observed MW:

83 kDa

Purification Method:

Antigen affinity purification

Recommended Dilutions:

WB 1:200-1:1000

Applications

Tested Applications:

WB, ELISA

Species Specificity:

human, mouse

Positive Controls:

WB : mouse kidney tissue,

Background Information

ZNF600 belongs to the krueppel C2H2-type zinc-finger protein family. ZNF600 may be involved in transcriptional regulation. This antibody is specific to ZNF600.

Storage

Storage:

Store at -20°C. Stable for one year after shipment.

Storage Buffer:

PBS with 0.02% sodium azide and 50% glycerol pH 7.3.

Aliquoting is unnecessary for -20°C storage

*** 20ul sizes contain 0.1% BSA

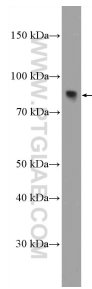
For technical support and original validation data for this product please contact:

T: 1 (888) 4PTGLAB (1-888-478-4522) (toll free in USA), or 1(312) 455-8498 (outside USA)

E: proteintech@ptglab.com
W: ptglab.com

This product is exclusively available under Proteintech Group brand and is not available to purchase from any other manufacturer.

Selected Validation Data



mouse kidney tissue were subjected to SDS PAGE followed by western blot with 20100-1-AP (ZNF600-Specific Antibody) at dilution of 1:300 incubated at room temperature for 1.5 hours.