

For Research Use Only

# ACTR10 Polyclonal antibody

Catalog Number: 20101-1-AP

Featured Product

4 Publications



## Basic Information

### Catalog Number:

20101-1-AP

### Size:

150ul, Concentration: 350 ug/ml by Nanodrop and 240 ug/ml by Bradford method using BSA as the standard;

### Source:

Rabbit

### Isotype:

IgG

### Immunogen Catalog Number:

AG13612

### GenBank Accession Number:

BC011997

### GeneID (NCBI):

55860

### UNIPROT ID:

Q9NZ32

### Full Name:

actin-related protein 10 homolog (S. cerevisiae)

### Calculated MW:

417 aa, 46 kDa

### Observed MW:

46 kDa

### Purification Method:

Antigen affinity purification

### Recommended Dilutions:

WB 1:500-1:1000

IP 0.5-4.0 ug for 1.0-3.0 mg of total protein lysate

IHC 1:20-1:200

IF/ICC 1:10-1:100

## Applications

### Tested Applications:

WB, IHC, IF/ICC, IP, ELISA

### Cited Applications:

WB

### Species Specificity:

human, mouse, rat

### Cited Species:

human, mouse, rat, monkey

**Note-IHC: suggested antigen retrieval with TE buffer pH 9.0; (\*) Alternatively, antigen retrieval may be performed with citrate buffer pH 6.0**

### Positive Controls:

WB : mouse brain tissue,

IP : mouse brain tissue,

IHC : human hepatocirrhosis tissue,

IF/ICC : HepG2 cells,

## Notable Publications

Author	Pubmed ID	Journal	Application
Amy L Herbert	29073112	Proc Natl Acad Sci U S A	WB
Ting-Yu Yeh	22918948	Mol Biol Cell	WB
Md Golam Sharoar	34371284	Neurobiol Aging	WB

## Storage

### Storage:

Store at -20°C. Stable for one year after shipment.

### Storage Buffer:

PBS with 0.02% sodium azide and 50% glycerol pH 7.3.

Aliquoting is unnecessary for -20°C storage

\*\*\* 20ul sizes contain 0.1% BSA

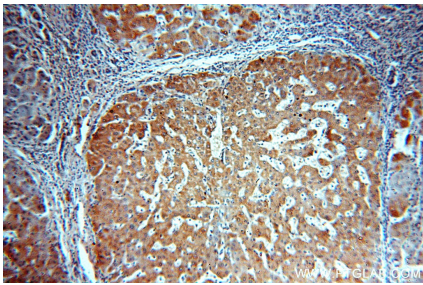
For technical support and original validation data for this product please contact:

T: 1 (888) 4PTGLAB (1-888-478-4522) (toll free in USA), or 1(312) 455-8498 (outside USA)

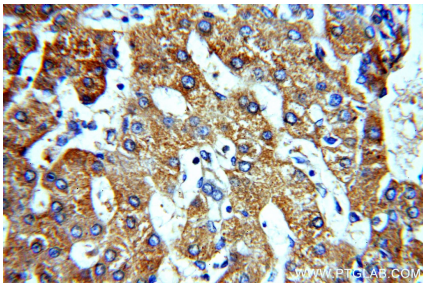
E: [proteintech@ptglab.com](mailto:proteintech@ptglab.com)  
W: [ptglab.com](http://ptglab.com)

This product is exclusively available under Proteintech Group brand and is not available to purchase from any other manufacturer.

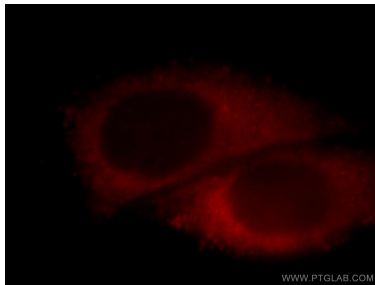
Selected Validation Data



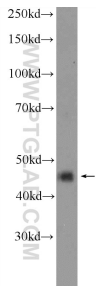
Immunohistochemical analysis of paraffin-embedded human hepatocirrhosis using 20101-1-AP (ACTR10 antibody) at dilution of 1:100 (under 10x lens).



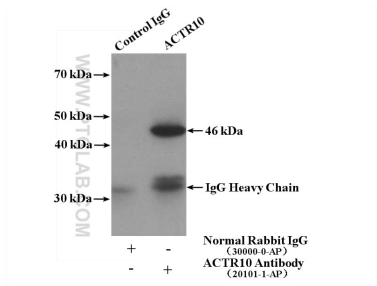
Immunohistochemical analysis of paraffin-embedded human hepatocirrhosis using 20101-1-AP (ACTR10 antibody) at dilution of 1:100 (under 40x lens).



Immunofluorescent analysis of HepG2 cells, using ACTR10 antibody 20101-1-AP at 1:25 dilution and Rhodamine-labeled goat anti-rabbit IgG (red).



mouse brain tissue were subjected to SDS PAGE followed by western blot with 20101-1-AP (ACTR10 Antibody) at dilution of 1:600 incubated at room temperature for 1.5 hours.



IP result of anti-ACTR10 (IP:20101-1-AP, 4ug; Detection:20101-1-AP 1:300) with mouse brain tissue lysate 4000ug.