

For Research Use Only

EEF2 Polyclonal antibody, PBS Only

Catalog Number: 20107-1-PBS

Featured Product



Basic Information

Catalog Number:

20107-1-PBS

Size:

100ug, Concentration: 1 mg/ml by Nanodrop;

Source:

Rabbit

Isotype:

IgG

Immunogen Catalog Number:

AG13826

GenBank Accession Number:

BC126259

GeneID (NCBI):

1938

UNIPROT ID:

P13639

Full Name:

eukaryotic translation elongation factor 2

Calculated MW:

858 aa, 95 kDa

Observed MW:

95-100 kDa

Purification Method:

Antigen affinity purification

Applications

Tested Applications:

WB, IHC, IF/ICC, FC (Intra), IP, Indirect ELISA

Species Specificity:

human, mouse, rat

Background Information

EEF2 (Eukaryotic Elongation Factor 2), also known as EF-2 and EF2, is a crucial protein involved in the process of protein synthesis in eukaryotic cells. It plays a pivotal role in the elongation phase of translation, where it facilitates the movement of the ribosome along the mRNA strand. This movement is essential for the addition of amino acids to the growing polypeptide chain.

Storage

Storage:

Store at -80°C.

Storage Buffer:

PBS Only

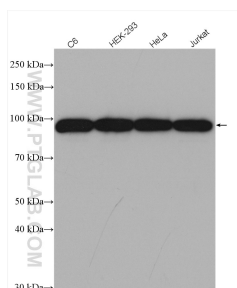
For technical support and original validation data for this product please contact:

T: 1 (888) 4PTGLAB (1-888-478-4522) (toll free in USA), or 1(312) 455-8498 (outside USA)

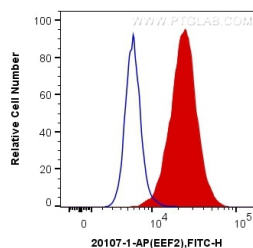
E: proteintech@ptglab.com
W: ptglab.com

This product is exclusively available under Proteintech Group brand and is not available to purchase from any other manufacturer.

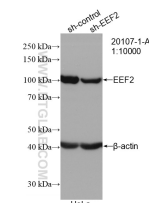
Selected Validation Data



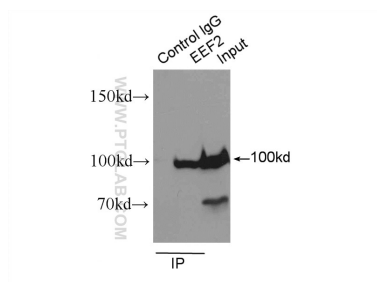
Various lysates were subjected to SDS PAGE followed by western blot with 20107-1-AP (EEF2 antibody) at dilution of 1:8000 incubated at room temperature for 1.5 hours. This data was developed using the same antibody clone with 20107-1-PBS in a different storage buffer formulation.



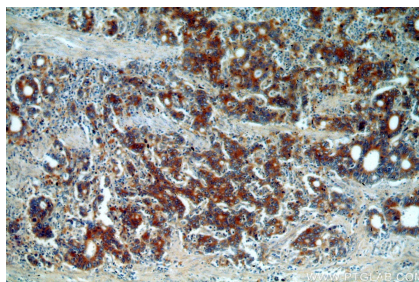
1X10⁶ HeLa cells were intracellularly stained with 0.2 ug Anti-Human EEF2 (20107-1-AP) and CoraLite®488-Conjugated AffiniPure Goat Anti-Rabbit IgG(H+L) at dilution 1:1000 (red), or 0.2 ug Control Antibody. Cells were fixed with 4% PFA and permeabilized with Flow Cytometry Perm Buffer (PF00011-C). This data was developed using the same antibody clone with 20107-1-PBS in a different storage buffer formulation.



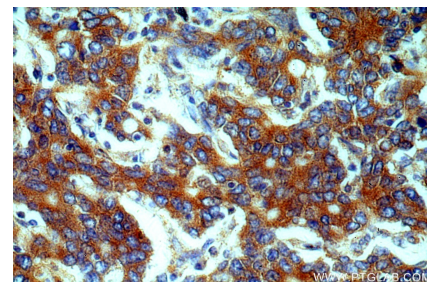
WB result of EEF2 antibody (20107-1-AP; 1:10000; incubated at room temperature for 1.5 hours) with sh-Control and sh-EEF2 transfected HeLa cells. This data was developed using the same antibody clone with 20107-1-PBS in a different storage buffer formulation.



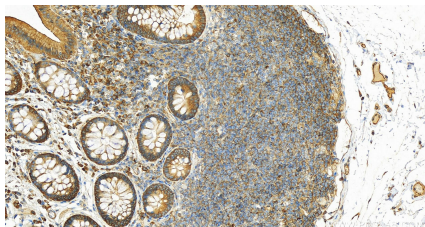
IP result of anti-EEF2 (IP:20107-1-AP, 3ug; Detection:20107-1-AP 1:500) with HeLa cells lysate 1600ug. This data was developed using the same antibody clone with 20107-1-PBS in a different storage buffer formulation.



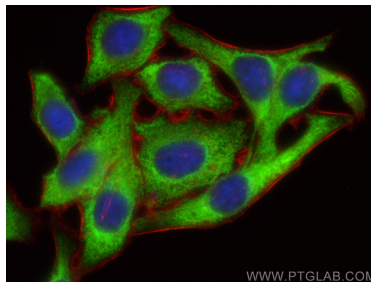
Immunohistochemical analysis of paraffin-embedded human stomach cancer using 20107-1-AP (EEF2 antibody) at dilution of 1:100 (under 10x lens). This data was developed using the same antibody clone with 20107-1-PBS in a different storage buffer formulation.



Immunohistochemical analysis of paraffin-embedded human stomach cancer using 20107-1-AP (EEF2 antibody) at dilution of 1:100 (under 40x lens). This data was developed using the same antibody clone with 20107-1-PBS in a different storage buffer formulation.



Immunohistochemical analysis of paraffin-embedded human normal colon slide using 20107-1-AP (EEF2 antibody) at dilution of 1:1600 (under 20x lens). Heat mediated antigen retrieval with Tris-EDTA buffer (pH 9.0). This data was developed using the same antibody clone with 20107-1-PBS in a different storage buffer formulation.



Immunofluorescent analysis of (-20°C Ethanol) fixed HepG2 cells using EEF2 antibody (20107-1-AP) at dilution of 1:200 and Multi-rAb CoraLite® Plus 488-Goat Anti-Rabbit Recombinant Secondary Antibody (H+L) (RGAR002), CL594-Phalloidin (red). This data was developed using the same antibody clone with 20107-1-PBS in a different storage buffer formulation.