

For Research Use Only

ARHGEF40 Polyclonal antibody

Catalog Number: 20110-1-AP



Basic Information

Catalog Number: 20110-1-AP	GenBank Accession Number: BC000084	Purification Method: Antigen affinity purification
Size: 150ul , Concentration: 240 µg/ml by Nanodrop and 213 µg/ml by Bradford method using BSA as the standard;	GeneID (NCBI): 55701	Recommended Dilutions: WB 1:500-1:1000 IHC 1:20-1:200 IF 1:50-1:500
Source: Rabbit	UNIPROT ID: Q8TER5	
Isotype: IgG	Full Name: hypothetical protein FLJ10357	
Immunogen Catalog Number: AG13886	Calculated MW: 414 aa, 46 kDa	
	Observed MW: 150-160 kDa	

Applications

Tested Applications:

IF, IHC, WB, ELISA

Species Specificity:

human, mouse

Note-IHC: suggested antigen retrieval with TE buffer pH 9.0; (*) Alternatively, antigen retrieval may be performed with citrate buffer pH 6.0

Positive Controls:

WB : SH-SY5Y cells, HEK-293 cells, mouse brain tissue, Neuro-2a cells

IHC : human kidney tissue,

IF : SH-SY5Y cells,

Storage

Storage:

Store at -20°C. Stable for one year after shipment.

Storage Buffer:

PBS with 0.02% sodium azide and 50% glycerol pH 7.3.

Aliquoting is unnecessary for -20°C storage

*** 20ul sizes contain 0.1% BSA

For technical support and original validation data for this product please contact:

T: 1 (888) 4PTGLAB (1-888-478-4522) (toll free in USA), or 1(312) 455-8498 (outside USA)

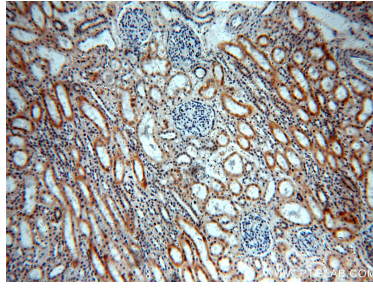
E: proteintech@ptglab.com
W: ptglab.com

This product is exclusively available under Proteintech Group brand and is not available to purchase from any other manufacturer.

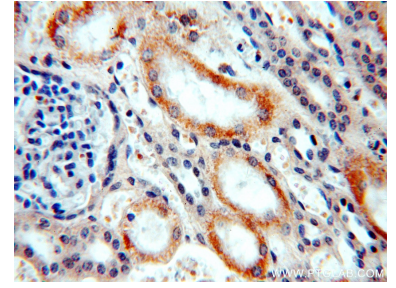
Selected Validation Data



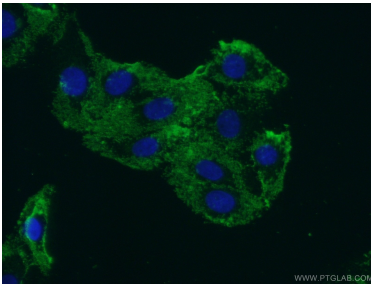
SH-SY5Y cells were subjected to SDS PAGE followed by western blot with 20110-1-AP (ARHGEF40 antibody) at dilution of 1:300 incubated at room temperature for 1.5 hours.



Immunohistochemical analysis of paraffin-embedded human kidney using 20110-1-AP (ARHGEF40 antibody) at dilution of 1:50 (under 10x lens).



Immunohistochemical analysis of paraffin-embedded human kidney using 20110-1-AP (ARHGEF40 antibody) at dilution of 1:50 (under 40x lens).



Immunofluorescent analysis of (-20°C Acetone) fixed SH-SY5Y cells using 20110-1-AP (ARHGEF40 antibody) at dilution of 1:50 and Alexa Fluor 488-conjugated AffiniPure Goat Anti-Rabbit IgG(H+L).