

For Research Use Only

# TMCO6 Polyclonal antibody

Catalog Number: 20117-1-AP



## Basic Information

### Catalog Number:

20117-1-AP

### Size:

150ul , Concentration: 150 ug/ml by Nanodrop and 133 ug/ml by Bradford method using BSA as the standard;

### Source:

Rabbit

### Isotype:

IgG

### Immunogen Catalog Number:

AG13992

### GenBank Accession Number:

BC001910

### GeneID (NCBI):

55374

### UNIPROT ID:

Q96DC7

### Full Name:

transmembrane and coiled-coil domains 6

### Calculated MW:

493 aa, 54 kDa

### Observed MW:

50-54 kDa

### Purification Method:

Antigen affinity purification

### Recommended Dilutions:

WB 1:1000-1:4000

IHC 1:20-1:200

## Applications

### Tested Applications:

WB, IHC, ELISA

### Species Specificity:

human, mouse, rat

**Note-IHC: suggested antigen retrieval with TE buffer pH 9.0; (\*) Alternatively, antigen retrieval may be performed with citrate buffer pH 6.0**

### Positive Controls:

WB : human testis tissue, mouse brain tissue

IHC : human spleen tissue, human lung tissue

## Storage

### Storage:

Store at -20°C. Stable for one year after shipment.

### Storage Buffer:

PBS with 0.02% sodium azide and 50% glycerol pH 7.3.

Aliquoting is unnecessary for -20°C storage

\*\*\* 20ul sizes contain 0.1% BSA

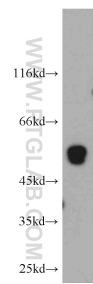
For technical support and original validation data for this product please contact:

T: 1 (888) 4PTGLAB (1-888-478-4522) (toll free in USA), or 1(312) 455-8498 (outside USA)

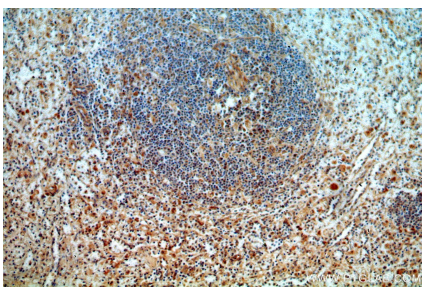
E: [proteintech@ptglab.com](mailto:proteintech@ptglab.com)  
W: [ptglab.com](http://ptglab.com)

This product is exclusively available under Proteintech Group brand and is not available to purchase from any other manufacturer.

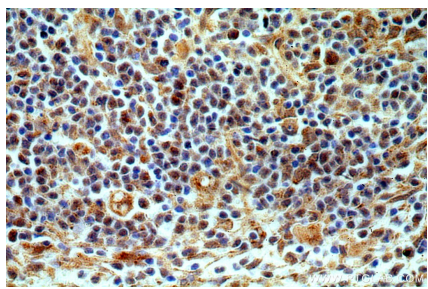
Selected Validation Data



human testis tissue were subjected to SDS PAGE followed by western blot with 20117-1-AP (TMC06 antibody) at dilution of 1:500 incubated at room temperature for 1.5 hours.



Immunohistochemical analysis of paraffin-embedded human spleen using 20117-1-AP (TMC06 antibody) at dilution of 1:100 (under 10x lens).



Immunohistochemical analysis of paraffin-embedded human spleen using 20117-1-AP (TMC06 antibody) at dilution of 1:100 (under 40x lens).