

For Research Use Only

# KCTD15 Polyclonal antibody

Catalog Number: 20128-1-AP

Featured Product

1 Publications



## Basic Information

|  |   |   |
|--|---|---|
| <b>Catalog Number:</b><br>20128-1-AP   | <b>GenBank Accession Number:</b><br>BC001185                                | <b>Purification Method:</b><br>Antigen affinity purification                        |
| <b>Size:</b><br>150ul , Concentration: 550 µg/ml by Nanodrop and 400 µg/ml by Bradford method using BSA as the standard; | <b>GeneID (NCBI):</b><br>79047  | <b>Recommended Dilutions:</b><br>WB 1:500-1:2000<br>IHC 1:50-1:500<br>IF 1:10-1:100 |
| <b>Source:</b><br>Rabbit   | <b>Full Name:</b><br>potassium channel tetramerisation domain containing 15 |   |
| <b>Isotype:</b><br>IgG   | <b>Calculated MW:</b><br>283 aa, 32 kDa                                     |   |
| <b>Immunogen Catalog Number:</b><br>AG13962  | <b>Observed MW:</b><br>26 kDa   |   |

## Applications

|   |  |
|---|--|
| <b>Tested Applications:</b><br>IF, IHC, WB, ELISA | <b>Positive Controls:</b><br>WB : HEK-293 cells, mouse lung tissue |
| <b>Cited Applications:</b><br>WB                  | <b>IHC :</b> mouse spleen tissue,                                  |
| <b>Species Specificity:</b><br>human, mouse, rat  | <b>IF :</b> HepG2 cells,   |
| <b>Cited Species:</b><br>human                    |  |

**Note-IHC: suggested antigen retrieval with TE buffer pH 9.0; (\*) Alternatively, antigen retrieval may be performed with citrate buffer pH 6.0**

## Background Information

### Notable Publications

| Author           | Pubmed ID | Journal     | Application |
|------------------|-----------|-------------|-------------|
| Eleonora Spiombi | 31685809  | Oncogenesis | WB          |

## Storage

**Storage:**  
Store at -20°C. Stable for one year after shipment.  
**Storage Buffer:**  
PBS with 0.02% sodium azide and 50% glycerol pH 7.3.  
Aliquoting is unnecessary for -20°C storage

\*\*\* 20ul sizes contain 0.1% BSA

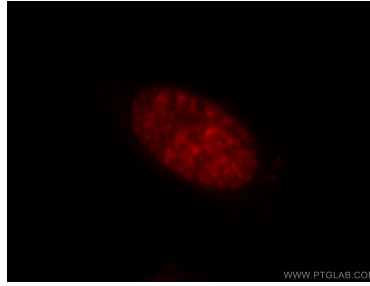
For technical support and original validation data for this product please contact:  
T: 1 (888) 4PTGLAB (1-888-478-4522) (toll free in USA), or 1(312) 455-8498 (outside USA)  
E: proteintech@ptglab.com  
W: ptglab.com

This product is exclusively available under Proteintech Group brand and is not available to purchase from any other manufacturer.

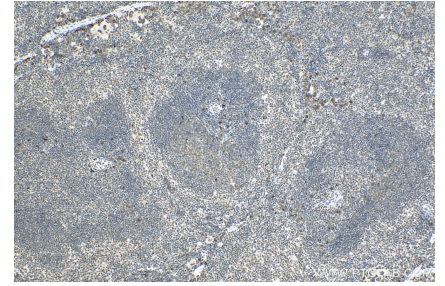
## Selected Validation Data



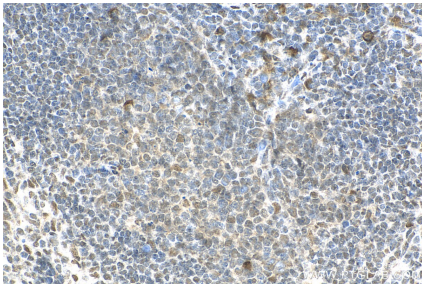
HEK-293 cells were subjected to SDS PAGE followed by western blot with 20128-1-AP (KCTD15 antibody) at dilution of 1:500 incubated at room temperature for 1.5 hours.



Immunofluorescent analysis of HepG2 cells, using KCTD15 antibody 20128-1-AP at 1:25 dilution and Rhodamine-labeled goat anti-rabbit IgG (red).



Immunohistochemical analysis of paraffin-embedded mouse spleen tissue slide using 20128-1-AP (KCTD15 antibody) at dilution of 1:200 (under 10x lens). Heat mediated antigen retrieval with Tris-EDTA buffer (pH 9.0).



Immunohistochemical analysis of paraffin-embedded mouse spleen tissue slide using 20128-1-AP (KCTD15 antibody) at dilution of 1:200 (under 40x lens). Heat mediated antigen retrieval with Tris-EDTA buffer (pH 9.0).