

For Research Use Only

RRP8 Polyclonal antibody

Catalog Number: 20129-1-AP

1 Publications



Basic Information

Catalog Number:

20129-1-AP

Size:

150ul, Concentration: 500 ug/ml by Nanodrop and 500 ug/ml by Bradford method using BSA as the standard;

Source:

Rabbit

Isotype:

IgG

Immunogen Catalog Number:

AG13994

GenBank Accession Number:

BC001071

GeneID (NCBI):

23378

UNIPROT ID:

O43159

Full Name:

ribosomal RNA processing 8, methyltransferase, homolog (yeast)

Calculated MW:

456 aa, 51 kDa

Observed MW:

51 kDa

Purification Method:

Antigen affinity purification

Recommended Dilutions:

WB 1:500-1:3000

IHC 1:20-1:200

IF/ICC 1:10-1:100

Applications

Tested Applications:

WB, IHC, IF/ICC, ELISA

Cited Applications:

WB

Species Specificity:

human, mouse, rat

Cited Species:

human

Note-IHC: suggested antigen retrieval with TE buffer pH 9.0; (*) Alternatively, antigen retrieval may be performed with citrate buffer pH 6.0

Positive Controls:

WB : human brain tissue,

IHC : human skin tissue,

IF/ICC : Hela cells,

Notable Publications

Author	Pubmed ID	Journal	Application
Kai You	38722372	J Cancer Res Clin Oncol	WB

Storage

Storage:

Store at -20°C. Stable for one year after shipment.

Storage Buffer:

PBS with 0.02% sodium azide and 50% glycerol pH 7.3.

Aliquoting is unnecessary for -20°C storage

*** 20ul sizes contain 0.1% BSA

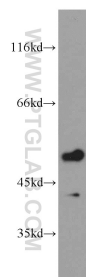
For technical support and original validation data for this product please contact:

T: 1 (888) 4PTGLAB (1-888-478-4522) (toll free in USA), or 1(312) 455-8498 (outside USA)

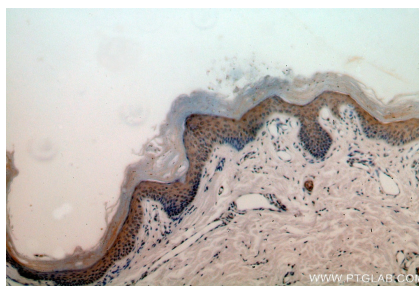
E: proteintech@ptglab.com
W: ptglab.com

This product is exclusively available under Proteintech Group brand and is not available to purchase from any other manufacturer.

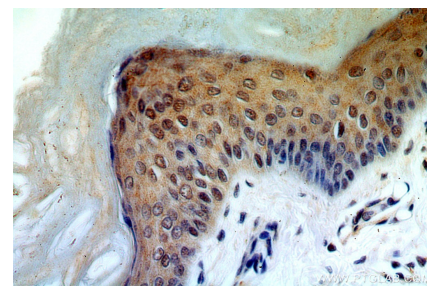
Selected Validation Data



human brain tissue were subjected to SDS PAGE followed by western blot with 20129-1-AP (RRP8 antibody) at dilution of 1:1500 incubated at room temperature for 1.5 hours.



Immunohistochemical analysis of paraffin-embedded human skin using 20129-1-AP (RRP8 antibody) at dilution of 1:100 (under 10x lens).



Immunohistochemical analysis of paraffin-embedded human skin using 20129-1-AP (RRP8 antibody) at dilution of 1:100 (under 40x lens).



Immunofluorescent analysis of HeLa cells, using RRP8 antibody 20129-1-AP at 1:25 dilution and Rhodamine-labeled goat anti-rabbit IgG (red). Blue pseudocolor = DAPI (fluorescent DNA dye).