

For Research Use Only

# ACAP1 Polyclonal antibody

Catalog Number: 20135-1-AP

Featured Product

2 Publications



## Basic Information

<b>Catalog Number:</b> 20135-1-AP	<b>GenBank Accession Number:</b> BC018543	<b>Purification Method:</b> Antigen affinity purification
<b>Size:</b> 150ul, Concentration: 300 ug/ml by Nanodrop and 180 ug/ml by Bradford method using BSA as the standard;	<b>GeneID (NCBI):</b> 9744	<b>Recommended Dilutions:</b> WB 1:1000-1:4000 IHC 1:20-1:200
<b>Source:</b> Rabbit	<b>UNIPROT ID:</b> Q15027	
<b>Isotype:</b> IgG	<b>Full Name:</b> ArfGAP with coiled-coil, ankyrin repeat and PH domains 1	
<b>Immunogen Catalog Number:</b> AG14068	<b>Calculated MW:</b> 740 aa, 82 kDa	
	<b>Observed MW:</b> 85 kDa	

## Applications

<b>Tested Applications:</b> WB, IHC, ELISA	<b>Positive Controls:</b> WB: HL-60 cells, Jurkat cells IHC: human lung tissue,
<b>Cited Applications:</b> WB, IF	
<b>Species Specificity:</b> human, mouse, rat	
<b>Cited Species:</b> human	

**Note-IHC: suggested antigen retrieval with TE buffer pH 9.0; (\*) Alternatively, antigen retrieval may be performed with citrate buffer pH 6.0**

## Background Information

ACAP1, also named as Centaurin-beta-1, is a 740 amino acid protein, which is expressed Highly in lung and spleen. ACAP1 as a GTPase-activating protein (GAP) for ADP ribosylation factor 6 (ARF6) is required for clathrin-dependent export of proteins from recycling endosomes to trans-Golgi network and cell surface and required for regulated export of ITGB1 from recycling endosomes to the cell surface and ITGB1-dependent cell migration.

## Notable Publications

Author	Pubmed ID	Journal	Application
Jian Li	26360030	Methods Cell Biol	WB,IF
Ning Wang	36051873	Comput Struct Biotechnol J	WB

## Storage

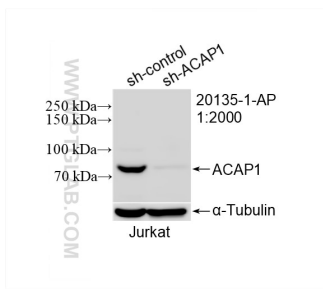
**Storage:**  
Store at -20°C. Stable for one year after shipment.  
**Storage Buffer:**  
PBS with 0.02% sodium azide and 50% glycerol pH 7.3.  
Aliquoting is unnecessary for -20°C storage

\*\*\* 20ul sizes contain 0.1% BSA

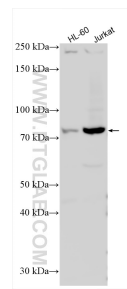
For technical support and original validation data for this product please contact:  
T: 1 (888) 4PTGLAB (1-888-478-4522) (toll free in USA), or 1(312) 455-8498 (outside USA)  
E: proteintech@ptglab.com  
W: ptglab.com

This product is exclusively available under Proteintech Group brand and is not available to purchase from any other manufacturer.

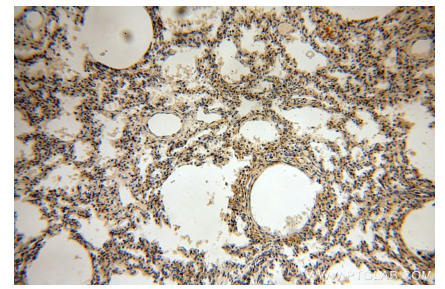
## Selected Validation Data



WB result of ACAP1 antibody (20135-1-AP; 1:2000; incubated at room temperature for 1.5 hours) with sh-Control and sh-ACAP1 transfected Jurkat cells.



Various lysates were subjected to SDS PAGE followed by western blot with 20135-1-AP (ACAP1 antibody) at dilution of 1:2000 incubated at room temperature for 1.5 hours.



Immunohistochemical analysis of paraffin-embedded human lung using 20135-1-AP (ACAP1 antibody) at dilution of 1:100 (under 10x lens).