

For Research Use Only

EXD2 Polyclonal antibody

Catalog Number: 20138-1-AP

Featured Product

2 Publications



Basic Information

Catalog Number:

20138-1-AP

Size:

150ul, Concentration: 400 ug/ml by Nanodrop and 287 ug/ml by Bradford method using BSA as the standard;

Source:

Rabbit

Isotype:

IgG

Immunogen Catalog Number:

AG14090

GenBank Accession Number:

BC001962

GeneID (NCBI):

55218

UNIPROT ID:

Q9NVH0

Full Name:

exonuclease 3'-5' domain containing 2

Calculated MW:

70 kD aa, 56 kDa

Observed MW:

56 kDa

Purification Method:

Antigen affinity purification

Recommended Dilutions:

WB 1:500-1:1000

IP 0.5-4.0 ug for 1.0-3.0 mg of total protein lysate

IHC 1:20-1:200

IF/ICC 1:50-1:500

Applications

Tested Applications:

WB, IHC, IF/ICC, IP, ELISA

Cited Applications:

WB, IF

Species Specificity:

human, mouse, rat

Cited Species:

mouse

Note-IHC: suggested antigen retrieval with TE buffer pH 9.0; (*) Alternatively, antigen retrieval may be performed with citrate buffer pH 6.0

Positive Controls:

WB: mouse lung tissue, mouse brain tissue, mouse pancreas tissue

IP: mouse lung tissue,

IHC: human testis tissue,

IF/ICC: HepG2 cells,

Notable Publications

Author	Pubmed ID	Journal	Application
Xikui Sun	34926456	Front Cell Dev Biol	WB
Opeyemi Olotu	36624638	Andrology	WB, IF

Storage

Storage:

Store at -20°C. Stable for one year after shipment.

Storage Buffer:

PBS with 0.02% sodium azide and 50% glycerol pH 7.3.

Aliquoting is unnecessary for -20°C storage

*** 20ul sizes contain 0.1% BSA

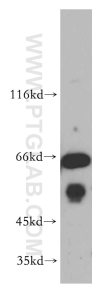
For technical support and original validation data for this product please contact:

T: 1 (888) 4PTGLAB (1-888-478-4522) (toll free in USA), or 1(312) 455-8498 (outside USA)

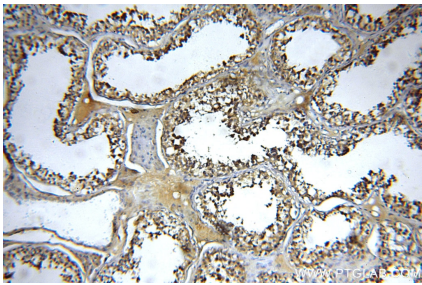
E: proteintech@ptglab.com
W: ptglab.com

This product is exclusively available under Proteintech Group brand and is not available to purchase from any other manufacturer.

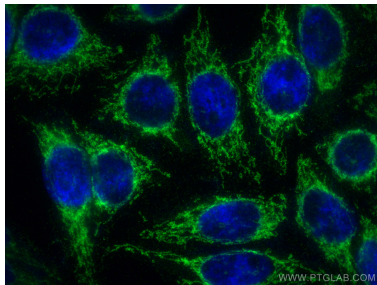
Selected Validation Data



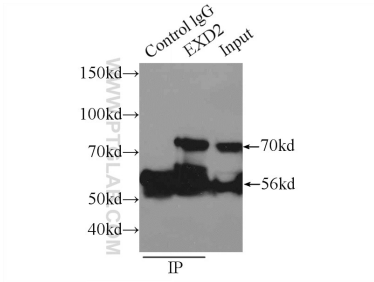
mouse lung tissue were subjected to SDS PAGE followed by western blot with 20138-1-AP (EXD2 antibody) at dilution of 1:300 incubated at room temperature for 1.5 hours.



Immunohistochemical analysis of paraffin-embedded human testis using 20138-1-AP (EXD2 antibody) at dilution of 1:50 (under 10x lens).



Immunofluorescent analysis of (-20°C Ethanol) fixed HepG2 cells using EXD2 antibody (20138-1-AP) at dilution of 1:200 and CoraLite®488-Conjugated Goat Anti-Rabbit IgG(H+L).



IP result of anti-EXD2 (IP:20138-1-AP, 3ug; Detection:20138-1-AP 1:300) with mouse lung tissue lysate 5160ug.