

For Research Use Only

# EXD2 Polyclonal antibody, PBS Only

Catalog Number: 20138-1-PBS

Featured Product



## Basic Information

**Catalog Number:**

20138-1-PBS

**Size:**

100ug, Concentration: 1 mg/ml by Nanodrop;

**Source:**

Rabbit

**Isotype:**

IgG

**Immunogen Catalog Number:**

AG14090

**GenBank Accession Number:**

BC001962

**GeneID (NCBI):**

55218

**UNIPROT ID:**

Q9NVH0

**Full Name:**

exonuclease 3'-5' domain containing 2

**Calculated MW:**

70 kD aa, 56 kDa

**Observed MW:**

56 kDa

**Purification Method:**

Antigen affinity purification

## Applications

**Tested Applications:**

WB, IHC, IF/ICC, IP, Indirect ELISA

**Species Specificity:**

human, mouse, rat

## Background Information

EXD2 (Exonuclease 3'-5' Domain Containing 2), is a protein with exonuclease activity of 3'-5' nucleic acid, which is involved in many biological processes in cells, including DNA repair, RNA processing and mitochondrial translation. EXD2 protein is mainly located in mitochondrial outer membrane, intermediate fiber cytoskeleton and DNA damage site. This protein may be a potential drug target in some cancers. For example, in ALT (telomere selective elongation) dependent cancer, the co-elimination of EXD2 with BLM, DNA2 or POLD3 may mediate synthetic lethality. In addition, EXD2 inhibitors may exert anticancer effects by inhibiting mitochondrial translation and metabolic reprogramming. It has two isoforms with molecular weights of 56 kDa and 70 kDa respectively.

## Storage

**Storage:**

Store at -80°C.

**Storage Buffer:**

PBS only, pH7.3

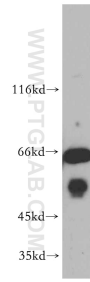
For technical support and original validation data for this product please contact:

T: 1 (888) 4PTGLAB (1-888-478-4522) (toll free in USA), or 1(312) 455-8498 (outside USA)

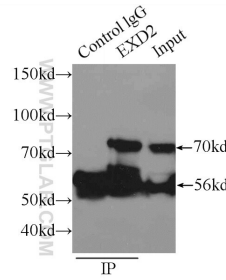
E: [proteintech@ptglab.com](mailto:proteintech@ptglab.com)  
W: [ptglab.com](http://ptglab.com)

This product is exclusively available under Proteintech Group brand and is not available to purchase from any other manufacturer.

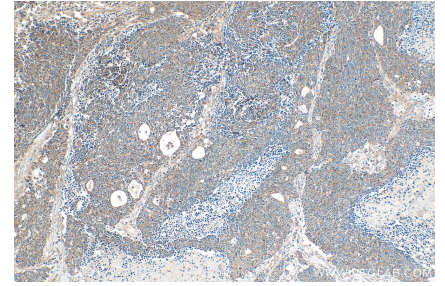
## Selected Validation Data



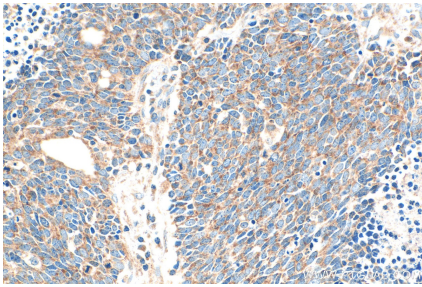
mouse lung tissue were subjected to SDS PAGE followed by western blot with 20138-1-AP (EXD2 antibody) at dilution of 1:300 incubated at room temperature for 1.5 hours. This data was developed using the same antibody clone with 20138-1-PBS in a different storage buffer formulation.



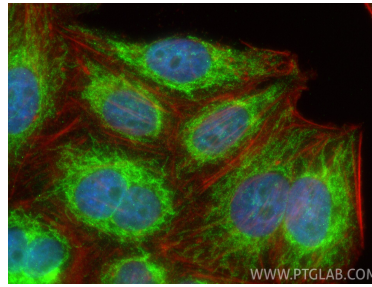
IP result of anti-EXD2 (IP:20138-1-AP, 3ug; Detection:20138-1-AP 1:300) with mouse lung tissue lysate 5160ug. This data was developed using the same antibody clone with 20138-1-PBS in a different storage buffer formulation.



Immunohistochemical analysis of paraffin-embedded human lung cancer tissue slide using 20138-1-AP (EXD2 antibody) at dilution of 1:800 (under 10x lens). Heat mediated antigen retrieval with Tris-EDTA buffer (pH 9.0). This data was developed using the same antibody clone with 20138-1-PBS in a different storage buffer formulation.



Immunohistochemical analysis of paraffin-embedded human lung cancer tissue slide using 20138-1-AP (EXD2 antibody) at dilution of 1:800 (under 40x lens). Heat mediated antigen retrieval with Tris-EDTA buffer (pH 9.0). This data was developed using the same antibody clone with 20138-1-PBS in a different storage buffer formulation.



Immunofluorescent analysis of (4% PFA) fixed HepG2 cells using EXD2 antibody (20138-1-AP) at dilution of 1:400 and CoraLite®488-Conjugated Goat Anti-Rabbit IgG(H+L) (SA00013-2), CL594-Phalloidin (red). This data was developed using the same antibody clone with 20138-1-PBS in a different storage buffer formulation.