

For Research Use Only

MYH4-Specific Polyclonal antibody

Catalog Number: 20140-1-AP

27 Publications



Basic Information

Catalog Number: 20140-1-AP	GenBank Accession Number: NM_017533	Purification Method: Antigen affinity purification
Size: 150ul , Concentration: 1000 µg/ml by Nanodrop;	GeneID (NCBI): 4622	Recommended Dilutions: WB 1:1000-1:4000 IHC 1:20-1:200 IF 1:50-1:500
Source: Rabbit	UNIPROT ID: Q9Y623	
Isotype: IgG	Full Name: myosin, heavy chain 4, skeletal muscle	
	Calculated MW: 223 kDa	
	Observed MW: 230 kDa	

Applications

Tested Applications:

WB, IF, IHC, ELISA

Cited Applications:

WB, IF

Species Specificity:

human, mouse, rat

Cited Species:

human, rat, mouse, pig

Note-IHC: suggested antigen retrieval with TE buffer pH 9.0; (*) Alternatively, antigen retrieval may be performed with citrate buffer pH 6.0

Positive Controls:

WB : mouse skeletal muscle tissue, human skeletal muscle tissue, rat skeletal muscle tissue

IHC : human skeletal muscle tissue, mouse skeletal muscle tissue

IF : mouse skeletal muscle tissue,

Background Information

Myosin is one of the most important skeletal muscle proteins. MYH4 functions muscle contraction. The antibody is specific to MYH4.

Notable Publications

Author	Pubmed ID	Journal	Application
Peiyuan Li	34586803	J Agric Food Chem	WB
Sung Ji Yun	25201081	Biochim Biophys Acta	WB
Qin He	33330599	Front Nutr	WB

Storage

Storage:

Store at -20°C. Stable for one year after shipment.

Storage Buffer:

PBS with 0.02% sodium azide and 50% glycerol pH 7.3.

Aliquoting is unnecessary for -20°C storage

*** 20ul sizes contain 0.1% BSA

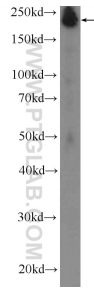
For technical support and original validation data for this product please contact:

T: 1 (888) 4PTGLAB (1-888-478-4522) (toll free in USA), or 1(312) 455-8498 (outside USA)

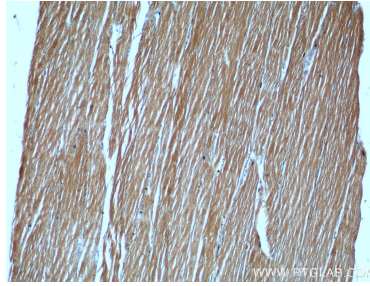
E: proteintech@ptglab.com
W: ptglab.com

This product is exclusively available under Proteintech Group brand and is not available to purchase from any other manufacturer.

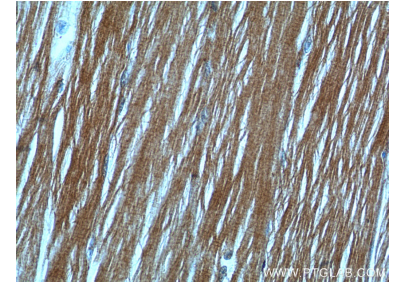
Selected Validation Data



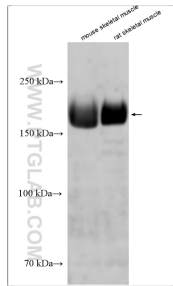
human skeletal muscle tissue were subjected to SDS PAGE followed by western blot with 20140-1-AP (MYH4-Specific Antibody) at dilution of 1:300 incubated at room temperature for 1.5 hours.



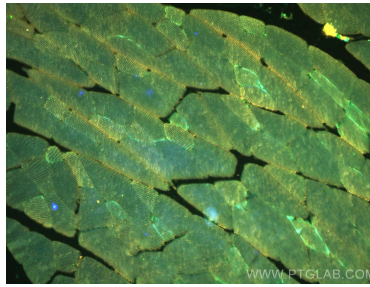
Immunohistochemical analysis of paraffin-embedded human skeletal muscle tissue slide using 20140-1-AP (MYH4-Specific Antibody) at dilution of 1:50 (under 10x lens).



Immunohistochemical analysis of paraffin-embedded human skeletal muscle tissue slide using 20140-1-AP (MYH4-Specific Antibody) at dilution of 1:50 (under 40x lens).



Various lysates were subjected to SDS PAGE followed by western blot with 20140-1-AP (MYH4-Specific antibody) at dilution of 1:2000 incubated at room temperature for 1.5 hours.



Immunofluorescent analysis of (4% PFA) fixed mouse skeletal muscle tissue using MYH4-Specific antibody (20140-1-AP) at dilution of 1:200, MYH2-specific antibody (55069-1-AP, green), MYH7-specific antibody (22280-1-AP, blue).