

For Research Use Only

CHST13-Specific Polyclonal antibody



Catalog Number: 20141-1-AP

Basic Information

Catalog Number: 20141-1-AP	GenBank Accession Number: NM_152889	Purification Method: Antigen affinity purification
Size: 150ul , Concentration: 750 µg/ml by Nanodrop and 420 µg/ml by Bradford method using BSA as the standard;	GeneID (NCBI): 166012	Recommended Dilutions: WB 1:500-1:2000 IP 0.5-4.0 ug for IP and 1:500-1:1000 for WB
Source: Rabbit	Full Name: carbohydrate (chondroitin 4) sulfotransferase 13	IHC 1:20-1:200 IF 1:10-1:100
Isotype: IgG	Calculated MW: 39 kDa	
	Observed MW: 25 kDa	

Applications

Tested Applications:
IF, IHC, IP, WB, ELISA

Species Specificity:
human, mouse, rat

Note-IHC: suggested antigen retrieval with TE buffer pH 9.0; (*) Alternatively, antigen retrieval may be performed with citrate buffer pH 6.0

Positive Controls:

WB : mouse liver tissue,

IP : mouse liver tissue,

IHC : human kidney tissue, human hepatocirrhosis tissue

IF : HeLa cells,

Background Information

CHST13, also named as C4ST3, belongs to the sulfotransferase 2 family. CHST13 catalyzes the transfer of sulfate to position 4 of the N-acetylgalactosamine (GalNAc) residue of chondroitin. Chondroitin sulfate constitutes the predominant proteoglycan present in cartilage and is distributed on the surfaces of many cells and extracellular matrices. CHST13 transfers sulfate to the C4 hydroxyl of beta1,4-linked GalNAc that is substituted with a beta-linked glucuronic acid at the C-3 hydroxyl. No activity toward dermatan. The antibody is specific to CHST13.

Storage

Storage:

Store at -20°C. Stable for one year after shipment.

Storage Buffer:

PBS with 0.02% sodium azide and 50% glycerol pH 7.3.

Aliquoting is unnecessary for -20°C storage

*** 20ul sizes contain 0.1% BSA

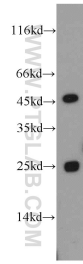
For technical support and original validation data for this product please contact:

T: 1 (888) 4PTGLAB (1-888-478-4522) (toll free in USA), or 1(312) 455-8498 (outside USA)

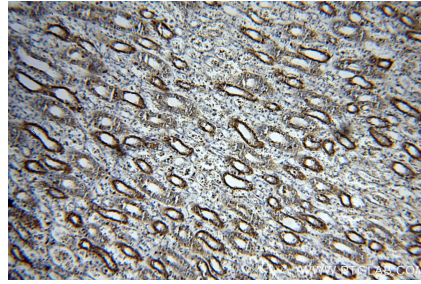
E: proteintech@ptglab.com
W: ptglab.com

This product is exclusively available under Proteintech Group brand and is not available to purchase from any other manufacturer.

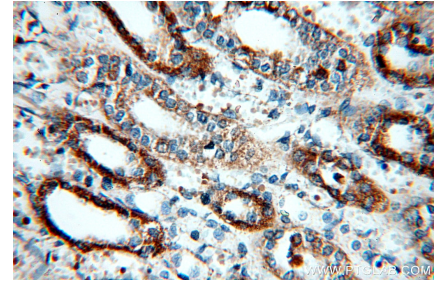
Selected Validation Data



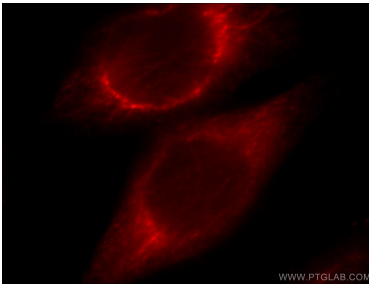
mouse liver tissue were subjected to SDS PAGE followed by western blot with 20141-1-AP (CHST13-Specific antibody) at dilution of 1:500 incubated at room temperature for 1.5 hours.



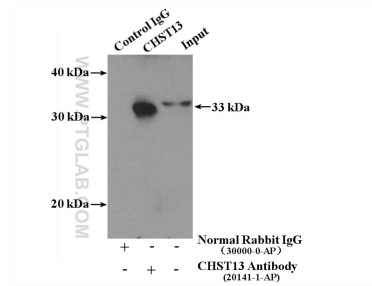
Immunohistochemical analysis of paraffin-embedded human kidney using 20141-1-AP (CHST13-Specific antibody) at dilution of 1:100 (under 10x lens).



Immunohistochemical analysis of paraffin-embedded human kidney using 20141-1-AP (CHST13-Specific antibody) at dilution of 1:100 (under 40x lens).



Immunofluorescent analysis of HeLa cells, using CHST13 antibody 20141-1-AP at 1:25 dilution and Rhodamine-labeled goat anti-rabbit IgG (red).



IP Result of anti-CHST13-Specific (IP:20141-1-AP, 4ug; Detection:20141-1-AP 1:500) with mouse liver tissue lysate 4000ug.