

For Research Use Only

# SHP2 Polyclonal antibody, PBS Only

Catalog Number: 20145-1-PBS

Featured Product



## Basic Information

### Catalog Number:

20145-1-PBS

### Size:

100ug, Concentration: 1 mg/ml by Nanodrop;

### Source:

Rabbit

### Isotype:

IgG

### Immunogen Catalog Number:

AG13660

### GenBank Accession Number:

BC008692

### GeneID (NCBI):

5781

### UNIPROT ID:

Q06124

### Full Name:

protein tyrosine phosphatase, non-receptor type 11

### Calculated MW:

597 aa, 68 kDa

### Observed MW:

68-75 kDa

### Purification Method:

Antigen affinity purification

## Applications

### Tested Applications:

WB, IHC, IF/ICC, IP, Indirect ELISA

### Species Specificity:

human, mouse, rat

## Background Information

PTPN11 (protein tyrosine phosphatase, non-receptor type 11) is also named as PTP-1D, PTP2, PTP2C, PTP3, SHP2, CFC, CFC, BPTP3, SH-PTP2, SH-PTP3, MGC14433 and belongs to the protein-tyrosine phosphatase family and non-receptor class 2 subfamily. It modulates and regulates signaling through numerous pathways, many of which are active in the developing endocardial cushions and implicated the ERK pathway as a central mechanism (PMID:19017799). Its signaling may play equally important roles in retinal survival in both physiological and pathological conditions (PMID:21576358). Defects in PTPN11 are the cause of LEOPARD syndrome type 1 (LEOPARD1), Noonan syndrome type 1 (NS1), juvenile myelomonocytic leukemia (JMML) and metachondromatosis (MC). It has 3 isoforms produced by alternative splicing.

## Storage

### Storage:

Store at -80°C.

### Storage Buffer:

PBS Only

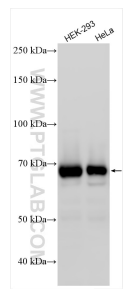
For technical support and original validation data for this product please contact:

T: 1 (888) 4PTGLAB (1-888-478-4522) (toll free in USA), or 1(312) 455-8498 (outside USA)

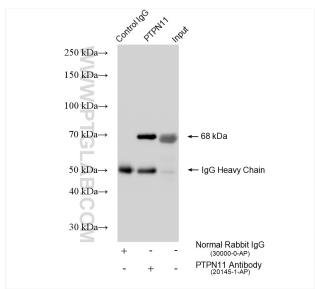
E: [proteintech@ptglab.com](mailto:proteintech@ptglab.com)  
W: [ptglab.com](http://ptglab.com)

This product is exclusively available under Proteintech Group brand and is not available to purchase from any other manufacturer.

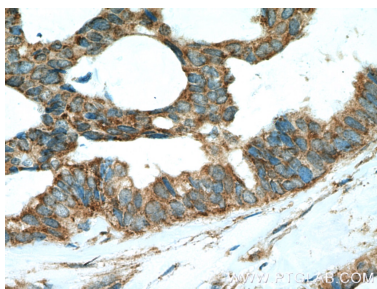
Selected Validation Data



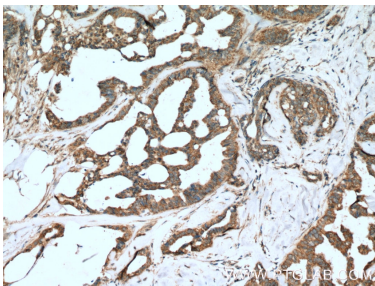
Various lysates were subjected to SDS PAGE followed by western blot with 20145-1-AP (PTPN11/SHP2 antibody) at dilution of 1:20000 incubated at room temperature for 1.5 hours. This data was developed using the same antibody clone with 20145-1-PBS in a different storage buffer formulation.



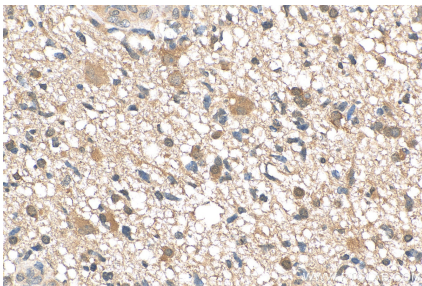
IP result of anti-PTPN11/SHP2 (IP:20145-1-AP, 4ug; Detection:20145-1-AP 1:10000) with HEK-293 cells lysate 1575 ug. This data was developed using the same antibody clone with 20145-1-PBS in a different storage buffer formulation.



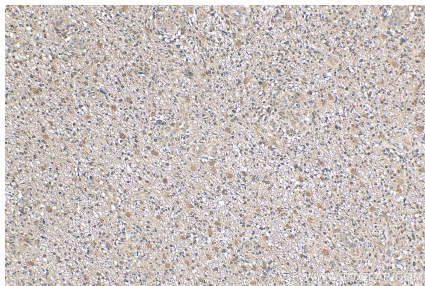
Immunohistochemical analysis of paraffin-embedded human breast cancer tissue slide using 20145-1-AP (SHP2 antibody at dilution of 1:200 (under 40x lens). Heat mediated antigen retrieval with Tris-EDTA buffer (pH 9.0). This data was developed using the same antibody clone with 20145-1-PBS in a different storage buffer formulation.



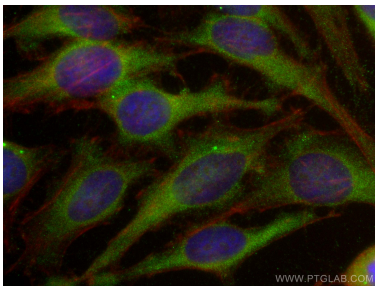
Immunohistochemical analysis of paraffin-embedded human breast cancer tissue slide using 20145-1-AP (SHP2 antibody at dilution of 1:200 (under 10x lens). Heat mediated antigen retrieval with Tris-EDTA buffer (pH 9.0). This data was developed using the same antibody clone with 20145-1-PBS in a different storage buffer formulation.



Immunohistochemical analysis of paraffin-embedded human gliomas tissue slide using 20145-1-AP (SHP2 antibody) at dilution of 1:200 (under 40x lens). Heat mediated antigen retrieval with Tris-EDTA buffer (pH 9.0). This data was developed using the same antibody clone with 20145-1-PBS in a different storage buffer formulation.



Immunohistochemical analysis of paraffin-embedded human gliomas tissue slide using 20145-1-AP (SHP2 antibody) at dilution of 1:200 (under 10x lens). Heat mediated antigen retrieval with Tris-EDTA buffer (pH 9.0). This data was developed using the same antibody clone with 20145-1-PBS in a different storage buffer formulation.



Immunofluorescent analysis of (-20°C Ethanol) fixed HeLa cells using SHP2 antibody (20145-1-AP) at dilution of 1:400 and CoraLite®488-Conjugated AffiniPure Goat Anti-Rabbit IgG(H+L), CL594-Phalloidin (red). This data was developed using the same antibody clone with 20145-1-PBS in a different storage buffer formulation.