

For Research Use Only

B4GALT6 Polyclonal antibody

Catalog Number: 20148-1-AP

Featured Product

2 Publications



Basic Information

Catalog Number: 20148-1-AP	GenBank Accession Number: BC074884	Purification Method: Antigen affinity purification
Size: 150ul, Concentration: 400 µg/ml by Nanodrop;	GeneID (NCBI): 9331	Recommended Dilutions: WB 1:500-1:1000 IHC 1:20-1:200 IF 1:10-1:100
Source: Rabbit	Full Name: UDP-Gal:betaGlcNAc beta 1,4-galactosyltransferase, polypeptide 6	
Isotype: IgG	Calculated MW: 382 aa, 45 kDa	
Immunogen Catalog Number: AG13686	Observed MW: 45-60 kDa	

Applications

Tested Applications:
IF, IHC, WB, ELISA

Cited Applications:
IF, IHC

Species Specificity:
human, mouse, rat

Cited Species:
human, mouse

Note-IHC: suggested antigen retrieval with TE buffer pH 9.0; (*) Alternatively, antigen retrieval may be performed with citrate buffer pH 6.0

Positive Controls:

WB: mouse heart tissue, mouse kidney tissue, HEK-293 cells, mouse brain tissue

IHC: human colon tissue, human brain tissue

IF: HeLa cells,

Background Information

Beta-1,4-galactosyltransferase 6 (B4GALT6) is a member of the beta 4-galactosyltransferase family that catalyzes the biosynthesis of glycosphingolipids in UDP-dependent manner (PMID: 23744354). B4GALT6 in astrocytes boosts CNS inflammation and promote neurodegeneration during chronic CNS inflammation (PMID: 25216636).

Notable Publications

Author	Pubmed ID	Journal	Application
Lior Mayo	25216636	Nat Med	IF
Jiřina Procházková	32447053	Biochim Biophys Acta Mol Cell Biol Lipids	IHC

Storage

Storage:

Store at -20°C. Stable for one year after shipment.

Storage Buffer:

PBS with 0.02% sodium azide and 50% glycerol pH 7.3.

Aliquoting is unnecessary for -20°C storage

*** 20ul sizes contain 0.1% BSA

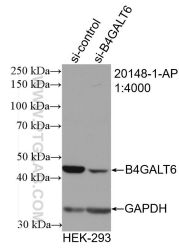
For technical support and original validation data for this product please contact:

T: 1 (888) 4PTGLAB (1-888-478-4522) (toll free in USA), or 1(312) 455-8498 (outside USA)

E: proteintech@ptglab.com
W: ptglab.com

This product is exclusively available under Proteintech Group brand and is not available to purchase from any other manufacturer.

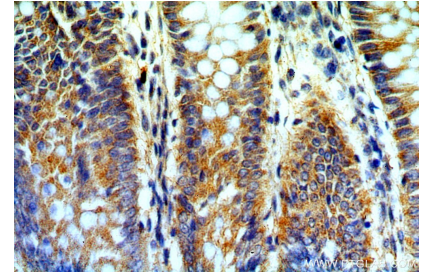
Selected Validation Data



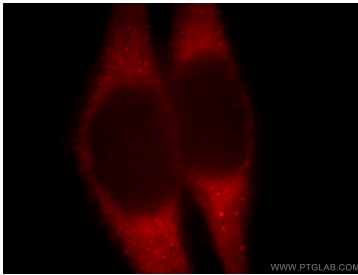
WB result of B4GALT6 antibody (20148-1-AP; 1:4000; incubated at room temperature for 1.5 hours) with sh-Control and sh-B4GALT6 transfected HEK-293 cells.



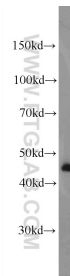
Immunohistochemical analysis of paraffin-embedded human colon using 20148-1-AP (B4GALT6 antibody) at dilution of 1:100 (under 10x lens).



Immunohistochemical analysis of paraffin-embedded human colon using 20148-1-AP (B4GALT6 antibody) at dilution of 1:100 (under 40x lens).



Immunofluorescent analysis of HeLa cells, using B4GALT6 antibody 20148-1-AP at 1:25 dilution and Rhodamine-labeled goat anti-rabbit IgG (red).



mouse heart tissue were subjected to SDS PAGE followed by western blot with 20148-1-AP (B4GALT6 Antibody) at dilution of 1:600 incubated at room temperature for 1.5 hours.