

For Research Use Only

LGR4 Polyclonal antibody

Catalog Number: 20150-1-AP

7 Publications



Basic Information

Catalog Number:

20150-1-AP

Size:

150ul, Concentration: 600 ug/ml by Nanodrop;

Source:

Rabbit

Isotype:

IgG

Immunogen Catalog Number:

AG13695

GenBank Accession Number:

BC033039

GeneID (NCBI):

55366

UNIPROT ID:

Q9BXB1

Full Name:

leucine-rich repeat-containing G protein-coupled receptor 4

Calculated MW:

104 kDa

Purification Method:

Antigen affinity purification

Recommended Dilutions:

IHC 1:1000-1:4000

Applications

Tested Applications:

IHC, ELISA

Cited Applications:

WB, IHC

Species Specificity:

human, mouse, rat

Cited Species:

human, mouse, pig

Note-IHC: suggested antigen retrieval with TE buffer pH 9.0; (*) Alternatively, antigen retrieval may be performed with citrate buffer pH 6.0

Positive Controls:

IHC : human small intestine tissue,

Background Information

LGR4, also known as GPR48, is a member of the leucine-rich GPCR family. LGR4 is composed of a large NH₂-terminal extracellular domain containing 18 LRRs, the seven membrane-spanning segments, and a COOH-terminal intracellular domain. LGR4 is a receptor for R-spondins that potentiates the canonical Wnt signaling pathway and is involved in the formation of various organs. It has also been shown that LGR4 regulates cyclic AMP/protein kinase A (PKA) signalling. (PMID: 23756652; 17178856; 24212090)

Notable Publications

Author	Pubmed ID	Journal	Application
Pingping Zhu	30224759	Nat Cell Biol	WB
Xiaofeng Zhou	34175894	Cell Death Dis	WB
Xuesong Su	34181940	Exp Cell Res	IHC

Storage

Storage:

Store at -20°C. Stable for one year after shipment.

Storage Buffer:

PBS with 0.02% sodium azide and 50% glycerol pH 7.3.

Aliquoting is unnecessary for -20°C storage

*** 20ul sizes contain 0.1% BSA

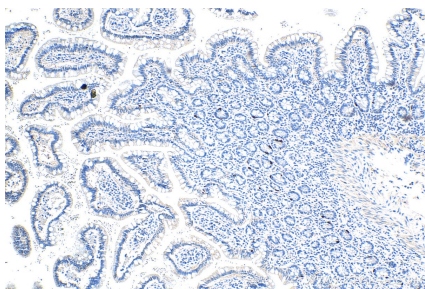
For technical support and original validation data for this product please contact:

T: 1 (888) 4PTGLAB (1-888-478-4522) (toll free in USA), or 1(312) 455-8498 (outside USA)

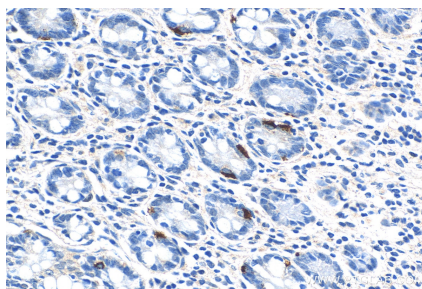
E: proteintech@ptglab.com
W: ptglab.com

This product is exclusively available under Proteintech Group brand and is not available to purchase from any other manufacturer.

Selected Validation Data



Immunohistochemical analysis of paraffin-embedded human small intestine tissue slide using 20150-1-AP (LGR4 antibody) at dilution of 1:2000 (under 10x lens).



Immunohistochemical analysis of paraffin-embedded human small intestine tissue slide using 20150-1-AP (LGR4 antibody) at dilution of 1:2000 (under 40x lens).