

For Research Use Only

GLB1L3 Polyclonal antibody

Catalog Number: 20159-1-AP



Basic Information

Catalog Number:

20159-1-AP

Size:

150ul , Concentration: 500 ug/ml by Nanodrop;

Source:

Rabbit

Isotype:

IgG

Immunogen Catalog Number:

AG14083

GenBank Accession Number:

BC011001

GeneID (NCBI):

112937

UNIPROT ID:

Q8NCI6

Full Name:

galactosidase, beta 1-like 3

Calculated MW:

653 aa, 75 kDa

Observed MW:

35 kDa

Purification Method:

Antigen affinity purification

Recommended Dilutions:

WB 1:500-1:2000

Applications

Tested Applications:

WB, ELISA

Species Specificity:

mouse, rat

Positive Controls:

WB : mouse testis tissue, rat testis tissue

Background Information

Glb1l3 is a member of the glycosyl hydrolase 35 family of proteins. These proteins display hydrolase activity catalyzing the cleavage of lactose, as well as galactosyl residues from gangliosides, glycoproteins, and glycosaminoglycans (PMID: 21633714). Glb1l3 has 3 isoforms produced by alternative splicing, which is 75kDa, 36kDa and 35kDa.

Storage

Storage:

Store at -20°C. Stable for one year after shipment.

Storage Buffer:

PBS with 0.02% sodium azide and 50% glycerol pH 7.3.

Aliquoting is unnecessary for -20°C storage

*** 20ul sizes contain 0.1% BSA

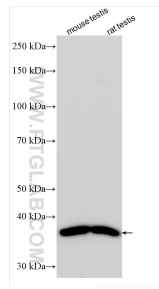
For technical support and original validation data for this product please contact:

T: 1 (888) 4PTGLAB (1-888-478-4522) (toll free in USA), or 1(312) 455-8498 (outside USA)

E: proteintech@ptglab.com
W: ptglab.com

This product is exclusively available under Proteintech Group brand and is not available to purchase from any other manufacturer.

Selected Validation Data



Various lysates were subjected to SDS PAGE followed by western blot with 20159-1-AP (GLB1L3 antibody) at dilution of 1:1000 incubated at room temperature for 1.5 hours.