

For Research Use Only

PLCXD1 Polyclonal antibody, PBS Only

Catalog Number: 20161-1-PBS



Basic Information

Catalog Number: 20161-1-PBS	GenBank Accession Number: BC005028	Purification Method: Antigen affinity purification
Size: 100ug , Concentration: 1 mg/ml by Nanodrop;	GeneID (NCBI): 55344	
Source: Rabbit	UNIPROT ID: Q9NUJ7	
Isotype: IgG	Full Name: phosphatidylinositol-specific phospholipase C, X domain containing 1	
Immunogen Catalog Number: AG14086	Calculated MW: 323 aa, 37 kDa	

Applications

Tested Applications:
IHC, IF/ICC, Indirect ELISA

Species Specificity:
human, mouse

Background Information

Phosphatidylinositol-specific phospholipase C (PI-PLC) enzymes comprise a small family of receptor-regulated phosphodiesterases that control many cellular processes by the regulation of cytosolic calcium and/or the activity of several protein kinases. At least three tissue-specific PLCXD isoforms exist in humans, comprising hPLCXD-1, hPLCXD-2 and hPLCXD-3 (PMID: 22732399). Mutations in the PLCXD1 gene are associated with diseases such as Leri-Weill Dyschondrosteosis.

Storage

Storage:
Store at -80°C.

Storage Buffer:
PBS only, pH7.3

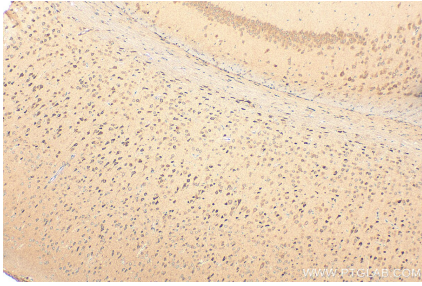
For technical support and original validation data for this product please contact:

T: 1 (888) 4PTGLAB (1-888-478-4522) (toll free in USA), or 1(312) 455-8498 (outside USA)

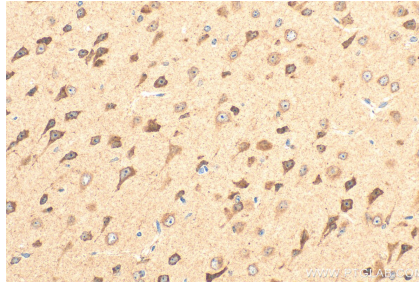
E: proteintech@ptglab.com
W: ptglab.com

This product is exclusively available under Proteintech Group brand and is not available to purchase from any other manufacturer.

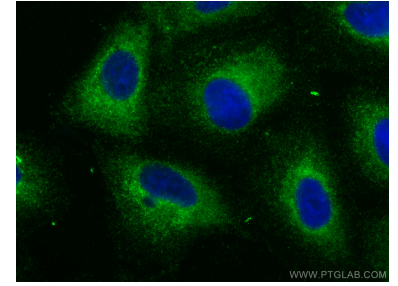
Selected Validation Data



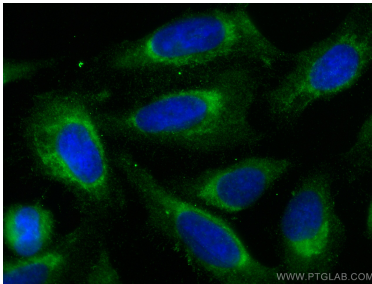
Immunohistochemical analysis of paraffin-embedded mouse brain tissue slide using 20161-1-AP (PLCXD1 antibody) at dilution of 1:200 (under 10x lens). Heat mediated antigen retrieval with Tris-EDTA buffer (pH 9.0). This data was developed using the same antibody clone with 20161-1-PBS in a different storage buffer formulation.



Immunohistochemical analysis of paraffin-embedded mouse brain tissue slide using 20161-1-AP (PLCXD1 antibody) at dilution of 1:200 (under 40x lens). Heat mediated antigen retrieval with Tris-EDTA buffer (pH 9.0). This data was developed using the same antibody clone with 20161-1-PBS in a different storage buffer formulation.



Immunofluorescent analysis of (-20°C Methanol) fixed A549 cells using PLCXD1 antibody (20161-1-AP) at dilution of 1:400 and CoraLite®488-Conjugated AffiniPure Goat Anti-Rabbit IgG(H+L). This data was developed using the same antibody clone with 20161-1-PBS in a different storage buffer formulation.



Immunofluorescent analysis of (-20°C Methanol) fixed U2OS cells using PLCXD1 antibody (20161-1-AP) at dilution of 1:400 and CoraLite®488-Conjugated AffiniPure Goat Anti-Rabbit IgG(H+L). This data was developed using the same antibody clone with 20161-1-PBS in a different storage buffer formulation.