

For Research Use Only

KATNAL1 Polyclonal antibody

Catalog Number: 20166-1-AP



Basic Information

Catalog Number:

20166-1-AP

Size:

150ul , Concentration: 400 ug/ml by Nanodrop and 287 ug/ml by Bradford method using BSA as the standard;

Source:

Rabbit

Isotype:

IgG

Immunogen Catalog Number:

AG13960

GenBank Accession Number:

BC000612

GeneID (NCBI):

84056

UNIPROT ID:

Q9BW62

Full Name:

katanin p60 subunit A-like 1

Calculated MW:

490 aa, 55 kDa

Observed MW:

50-55 kDa

Purification Method:

Antigen affinity purification

Recommended Dilutions:

WB 1:2000-1:10000

IP 0.5-4.0 ug for 1.0-3.0 mg of total protein lysate

Applications

Tested Applications:

WB, IP, ELISA

Species Specificity:

human

Positive Controls:

WB : HEK-293 cells, Jurkat cells, HeLa cells

IP : HeLa cells,

Background Information

KATNAL1 belongs to a family of microtubule-severing proteins and contains an N-terminal microtubule interaction and trafficking (MIT) domain, an ATPase AAA-type core domain, and a C-terminal Vps4_C domain. KATNAL1 is involved in regulating microtubule dynamics, which is essential for spermiogenesis and male fertility. It severs microtubules in an ATP-dependent manner, promoting rapid reorganization of cellular microtubule arrays (PMID: 22654668). In neurons, KATNAL1 plays a role in microtubule rearrangement during neuronal migration and process elongation. Additionally, mutations in KATNAL1 have been associated with intellectual disability and microcephaly in humans (PMID: 30448058).

Storage

Storage:

Store at -20°C. Stable for one year after shipment.

Storage Buffer:

PBS with 0.02% sodium azide and 50% glycerol pH 7.3.

Aliquoting is unnecessary for -20°C storage

*** 20ul sizes contain 0.1% BSA

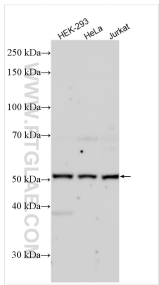
For technical support and original validation data for this product please contact:

T: 1 (888) 4PTGLAB (1-888-478-4522) (toll free in USA), or 1(312) 455-8498 (outside USA)

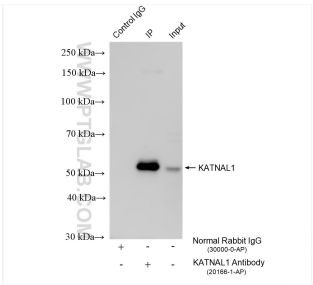
E: proteintech@ptglab.com
W: ptglab.com

This product is exclusively available under Proteintech Group brand and is not available to purchase from any other manufacturer.

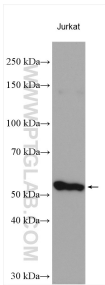
Selected Validation Data



Various lysates were subjected to SDS PAGE followed by western blot with 20166-1-AP (KATNAL1 antibody) at dilution of 1:5000 incubated at room temperature for 1.5 hours.



IP result of anti-KATNAL1 (IP:20166-1-AP, 4ug; Detection:20166-1-AP 1:4000) with HeLa cells lysate 1280 ug.



Jurkat cells were subjected to SDS PAGE followed by western blot with 20166-1-AP (KATNAL1 antibody) at dilution of 1:1000 incubated at room temperature for 1.5 hours.