

For Research Use Only

SLC25A23 Polyclonal antibody

Catalog Number: 20168-1-AP **1 Publications**



Basic Information

Catalog Number: 20168-1-AP	GenBank Accession Number: BC001656	Purification Method: Antigen affinity purification
Size: 150ul , Concentration: 1200 µg/ml by Nanodrop and 593 µg/ml by Bradford method using BSA as the standard;	GeneID (NCBI): 79085	Recommended Dilutions: WB 1:1000-1:4000 IHC 1:20-1:200
Source: Rabbit	Full Name: solute carrier family 25 (mitochondrial carrier; phosphate carrier), member 23	
Isotype: IgG	Calculated MW: 468 aa, 52 kDa	
Immunogen Catalog Number: AG13987	Observed MW: 49-54 kDa	

Applications

Tested Applications:

IHC, WB, ELISA

Cited Applications:

IHC

Species Specificity:

human, mouse, rat

Cited Species:

human

Note-IHC: suggested antigen retrieval with TE buffer pH 9.0; (*) Alternatively, antigen retrieval may be performed with citrate buffer pH 6.0

Positive Controls:

WB : mouse pancreas tissue, mouse skeletal muscle tissue, mouse testis tissue, SH-SY5Y cells

IHC : human pancreas tissue,

Background Information

Notable Publications

Author	Pubmed ID	Journal	Application
Ao-ran Liu	36254139	Biomed Res Int	IHC

Storage

Storage:

Store at -20°C. Stable for one year after shipment.

Storage Buffer:

PBS with 0.02% sodium azide and 50% glycerol pH 7.3.

Aliquoting is unnecessary for -20°C storage

*** 20ul sizes contain 0.1% BSA

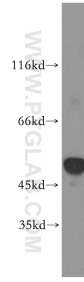
For technical support and original validation data for this product please contact:

T: 1 (888) 4PTGLAB (1-888-478-4522) (toll free in USA), or 1(312) 455-8498 (outside USA)

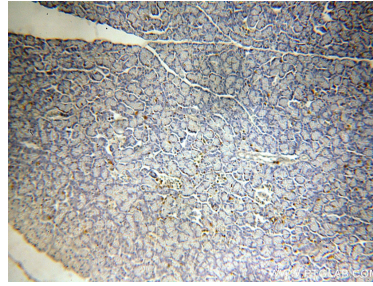
E: proteintech@ptglab.com
W: ptglab.com

This product is exclusively available under Proteintech Group brand and is not available to purchase from any other manufacturer.

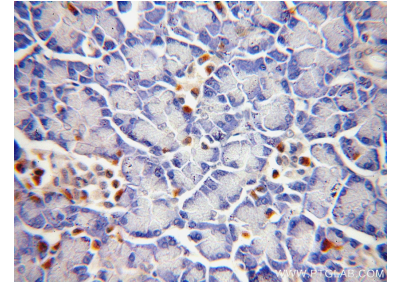
Selected Validation Data



mouse pancreas tissue were subjected to SDS PAGE followed by western blot with 20168-1-AP (SLC25A23 antibody) at dilution of 1:1000 incubated at room temperature for 1.5 hours.



Immunohistochemical analysis of paraffin-embedded human pancreas using 20168-1-AP (SLC25A23 antibody) at dilution of 1:100 (under 10x lens).



Immunohistochemical analysis of paraffin-embedded human pancreas using 20168-1-AP (SLC25A23 antibody) at dilution of 1:100 (under 40x lens).