

For Research Use Only

BRP16 Polyclonal antibody

Catalog Number: 20169-1-AP



Basic Information

Catalog Number:

20169-1-AP

Size:

150ul , Concentration: 350 ug/ml by Nanodrop and 307 ug/ml by Bradford method using BSA as the standard;

Source:

Rabbit

Isotype:

IgG

Immunogen Catalog Number:

AG13998

GenBank Accession Number:

BC003035

GeneID (NCBI):

51236

UNIPROT ID:

Q9BTY7

Full Name:

chromosome 8 open reading frame

30A

Calculated MW:

390 aa, 42 kDa

Observed MW:

42-50 kDa

Purification Method:

Antigen affinity purification

Recommended Dilutions:

WB 1:500-1:1000

IF/ICC 1:200-1:800

Applications

Tested Applications:

WB, IF/ICC, ELISA

Species Specificity:

human, mouse

Positive Controls:

WB : HeLa cells, HepG2 cells, RAW 264.7 cells, NIH/3T3 cells

IF/ICC : HEK-293 cells,

Storage

Storage:

Store at -20°C. Stable for one year after shipment.

Storage Buffer:

PBS with 0.02% sodium azide and 50% glycerol pH 7.3.

Aliquoting is unnecessary for -20°C storage

*** 20ul sizes contain 0.1% BSA

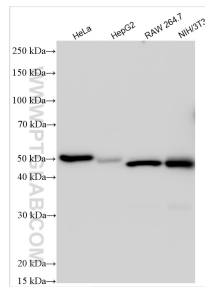
For technical support and original validation data for this product please contact:

T: 1 (888) 4PTGLAB (1-888-478-4522) (toll free in USA), or 1(312) 455-8498 (outside USA)

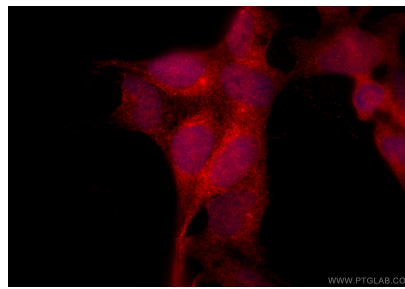
E: proteintech@ptglab.com
W: ptglab.com

This product is exclusively available under Proteintech Group brand and is not available to purchase from any other manufacturer.

Selected Validation Data



Various lysates were subjected to SDS PAGE followed by western blot with 20169-1-AP (BRP16 antibody) at dilution of 1:600 incubated at room temperature for 1.5 hours.



Immunofluorescent analysis of (4% PFA) fixed HEK-293 cells using BRP16 antibody (20169-1-AP) at dilution of 1:400 and CoraLite® 594-Conjugated Goat Anti-Rabbit IgG(H+L) (SA00013-4).