

For Research Use Only

# GLS2 Polyclonal antibody

Catalog Number: 20171-1-AP



## Basic Information

<b>Catalog Number:</b> 20171-1-AP	<b>GenBank Accession Number:</b> BC059370	<b>Purification Method:</b> Antigen affinity purification
<b>Size:</b> 150ul , Concentration: 650 ug/ml by Nanodrop;	<b>GeneID (NCBI):</b> 27165	<b>Recommended Dilutions:</b> WB 1:1000-1:4000 IHC 1:50-1:500
<b>Source:</b> Rabbit	<b>UNIPROT ID:</b> Q9UI32	
<b>Isotype:</b> IgG	<b>Full Name:</b> glutaminase 2 (liver, mitochondrial)	
<b>Immunogen Catalog Number:</b> AG14003	<b>Calculated MW:</b> 602 aa, 66 kDa	
	<b>Observed MW:</b> 66-70 kDa	

## Applications

<b>Tested Applications:</b> WB, IHC, ELISA	<b>Positive Controls:</b>
<b>Species Specificity:</b> human	<b>WB :</b> HeLa cells, HepG2 cells <b>IHC :</b> human liver tissue,

**Note-IHC:** suggested antigen retrieval with **TE buffer pH 9.0; (\*) Alternatively, antigen retrieval may be performed with citrate buffer pH 6.0**

## Background Information

GLS2, also named as GA and GLS, belongs to the glutaminase family. It is Glutaminase liver isoform . GLS2 plays an important role in the regulation of glutamine catabolism. It promotes mitochondrial respiration and increases ATP generation in cells by catalyzing the synthesis of glutamate and alpha-ketoglutarate. GLS2 may play a role in preventing tumor proliferation. This antibody is specific to GLS2.

## Storage

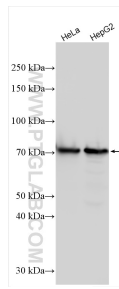
**Storage:**  
Store at -20°C. Stable for one year after shipment.  
**Storage Buffer:**  
PBS with 0.02% sodium azide and 50% glycerol pH 7.3.  
Aliquoting is unnecessary for -20°C storage

\*\*\* 20ul sizes contain 0.1% BSA

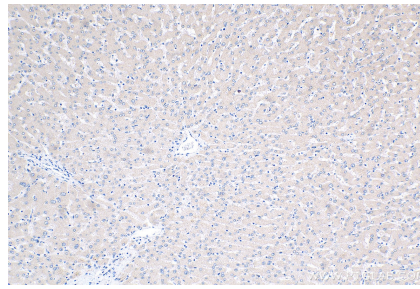
For technical support and original validation data for this product please contact:  
T: 1 (888) 4PTGLAB (1-888-478-4522) (toll free in USA), or 1(312) 455-8498 (outside USA)  
E: [proteintech@ptglab.com](mailto:proteintech@ptglab.com)  
W: [ptglab.com](http://ptglab.com)

This product is exclusively available under Proteintech Group brand and is not available to purchase from any other manufacturer.

## Selected Validation Data



Various lysates were subjected to SDS PAGE followed by western blot with 20171-1-AP (GLS2 antibody) at dilution of 1:2000 incubated at room temperature for 1.5 hours.



Immunohistochemical analysis of paraffin-embedded human liver tissue slide using 20171-1-AP (GLS2 antibody) at dilution of 1:200 (under 10x lens). Heat mediated antigen retrieval with Tris-EDTA buffer (pH 9.0).