

For Research Use Only

# EPN3 Polyclonal antibody

Catalog Number: 20178-1-AP



## Basic Information

### Catalog Number:

20178-1-AP

### Size:

150ul , Concentration: 300 ug/ml by Nanodrop;

### Source:

Rabbit

### Isotype:

IgG

### Immunogen Catalog Number:

AG14021

### GenBank Accession Number:

BC001038

### GeneID (NCBI):

55040

### UNIPROT ID:

Q9H201

### Full Name:

epsin 3

### Calculated MW:

632 aa, 68 kDa

### Observed MW:

68-70 kDa

### Purification Method:

Antigen affinity purification

### Recommended Dilutions:

WB 1:1000-1:8000

## Applications

### Tested Applications:

WB, ELISA

### Species Specificity:

human, mouse, rat

### Positive Controls:

WB : MCF-10A cells, MCF-7 cells, mouse stomach tissue, rat stomach tissue

## Background Information

Epsin 3 (EPN3) belongs to the epsin family, which also includes EPN1 and EPN2. They belong to the endocytic clathrin family and are involved in receptor endocytosis. EPN3 is expressed in breast cancer and is an oncogene associated with breast cancer prognosis and treatment (PMID: 34779498; PMID: 32541686).

## Storage

### Storage:

Store at -20°C. Stable for one year after shipment.

### Storage Buffer:

PBS with 0.02% sodium azide and 50% glycerol pH 7.3.

Aliquoting is unnecessary for -20°C storage

\*\*\* 20ul sizes contain 0.1% BSA

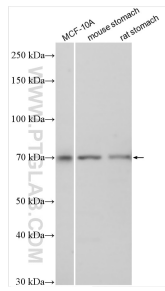
For technical support and original validation data for this product please contact:

T: 1 (888) 4PTGLAB (1-888-478-4522) (toll free in USA), or 1(312) 455-8498 (outside USA)

E: [proteintech@ptglab.com](mailto:proteintech@ptglab.com)  
W: [ptglab.com](http://ptglab.com)

This product is exclusively available under Proteintech Group brand and is not available to purchase from any other manufacturer.

## Selected Validation Data



Various lysates were subjected to SDS PAGE followed by western blot with 20178-1-AP (EPN3 antibody) at dilution of 1:4000 incubated at room temperature for 1.5 hours.