

For Research Use Only

FSTL1 Polyclonal antibody

Catalog Number: 20182-1-AP

Featured Product

14 Publications



Basic Information

Catalog Number: 20182-1-AP	GenBank Accession Number: BC000055	Purification Method: Antigen affinity purification
Size: 150ul, Concentration: 347 µg/ml by Bradford method using BSA as the standard;	GeneID (NCBI): 11167	Recommended Dilutions: WB 1:2000-1:10000 IP 0.5-4.0 ug for IP and 1:1000-1:4000 for WB IHC 1:50-1:500
Source: Rabbit	Full Name: follistatin-like 1	
Isotype: IgG	Calculated MW: 308 aa, 35 kDa	
Immunogen Catalog Number: AG14057	Observed MW: 35-40 kDa	

Applications

Tested Applications: IHC, IP, WB, ELISA	Positive Controls: WB : A2780 cells, HeLa cells, human placenta tissue, A431 cells, C6 cells IP : A2780 cells, IHC : human placenta tissue, human gliomas tissue, human pancreas tissue, rat colon tissue, rat testis tissue
Cited Applications: CoIP, IF, IHC, IP, WB	
Species Specificity: human, rat	
Cited Species: human, mouse	

Note-IHC: suggested antigen retrieval with TE buffer pH 9.0; (*) Alternatively, antigen retrieval may be performed with citrate buffer pH 6.0

Background Information

Follistatin-like 1 (FSTL1), initially discovered as a TGF-β1-induced gene, encodes a 308 amino acid secreted 45-55 kDa glycoprotein with a follistatin domain and two non-functional calcium-binding motifs. FSTL1 has been reported to be involved in the fate determination and maturation of epithelial cells. Ablation of the FSTL1 gene in the mouse results in several structural developmental defects and neonatal lethality due to respiratory failure, demonstrating its functional importance. FSTL1 has been reported to exhibit both pro- and anti-inflammatory actions, with a specific anti-apoptotic and protective effect in cardiac or renal cell injury. Zwijzen et al. (1994) detected several isoforms of FSTL1 with molecular masses of 40 to 48 kD which differs from the 50- to 55-kD products detected by Tanaka et al. (1998) (OMIM).

Notable Publications

Author	Pubmed ID	Journal	Application
Jean Chiou	31653686	Cancer Res	WB
Chuansha Gu	29844309	Cell Death Dis	WB,IHC,IP
Mengjie Wu	33791149	Am J Cancer Res	IHC,CoIP

Storage

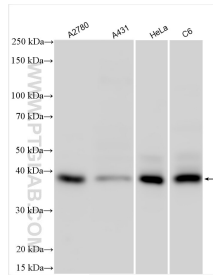
Storage:
Store at -20°C. Stable for one year after shipment.
Storage Buffer:
PBS with 0.02% sodium azide and 50% glycerol pH 7.3.
Aliquoting is unnecessary for -20°C storage

*** 20ul sizes contain 0.1% BSA

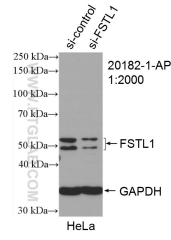
For technical support and original validation data for this product please contact:
T: 1 (888) 4PTGLAB (1-888-478-4522) (toll free in USA), or 1(312) 455-8498 (outside USA)
E: proteintech@ptglab.com
W: ptglab.com

This product is exclusively available under Proteintech Group brand and is not available to purchase from any other manufacturer.

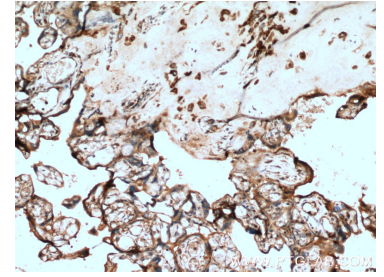
Selected Validation Data



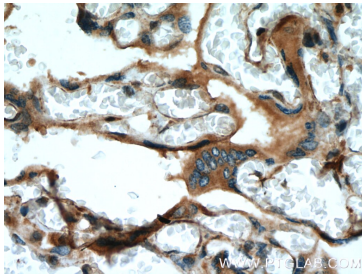
Various lysates were subjected to SDS PAGE followed by western blot with 20182-1-AP (FSTL1 antibody) at dilution of 1:5000 incubated at room temperature for 1.5 hours.



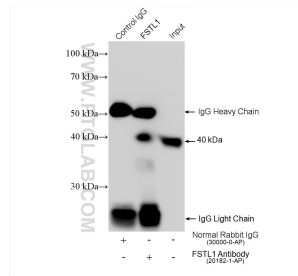
WB result of FSTL1 antibody (20182-1-AP; 1:2000; incubated at room temperature for 1.5 hours) with sh-Control and sh-FSTL1 transfected HeLa cells.



Immunohistochemical analysis of paraffin-embedded human placenta tissue slide using 20182-1-AP (FSTL1 antibody) at dilution of 1:200 (under 10x lens. Heat mediated antigen retrieval with Tris-EDTA buffer (pH 9.0).



Immunohistochemical analysis of paraffin-embedded human placenta tissue slide using 20182-1-AP (FSTL1 antibody) at dilution of 1:200 (under 40x lens. Heat mediated antigen retrieval with Tris-EDTA buffer (pH 9.0).



IP result of anti-FSTL1(IP:20182-1-AP, 4ug; Detection:20182-1-AP 1:2000) with A2780 cells lysate 960 ug.