

For Research Use Only

# BIN3 Polyclonal antibody

Catalog Number: 20186-1-AP



## Basic Information

**Catalog Number:**

20186-1-AP

**Size:**

150ul , Concentration: 400 ug/ml by Nanodrop and 293 ug/ml by Bradford method using BSA as the standard;

**Source:**

Rabbit

**Isotype:**

IgG

**Immunogen Catalog Number:**

AG14091

**GenBank Accession Number:**

BC001223

**GeneID (NCBI):**

55909

**UNIPROT ID:**

Q9NQY0

**Full Name:**

bridging integrator 3

**Calculated MW:**

253 aa, 30 kDa

**Observed MW:**

25 kDa

**Purification Method:**

Antigen affinity purification

**Recommended Dilutions:**

WB 1:500-1:1000

## Applications

**Tested Applications:**

WB, ELISA

**Species Specificity:**

human, mouse, rat

**Positive Controls:**

WB : Jurkat cells, A375 cells, HEK-293 cells, HeLa cells, mouse testis tissue

## Background Information

BIN3, also named as MEPCE and BCDIN3, belongs to the methyltransferase superfamily. It is an S-adenosyl-L-methionine-dependent methyltransferase that adds a methylphosphate cap at the 5'-end of 7SK snRNA, leading to stabilize it.

## Storage

**Storage:**

Store at -20°C. Stable for one year after shipment.

**Storage Buffer:**

PBS with 0.02% sodium azide and 50% glycerol pH 7.3.

Aliquoting is unnecessary for -20°C storage

\*\*\* 20ul sizes contain 0.1% BSA

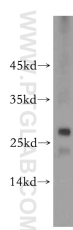
For technical support and original validation data for this product please contact:

T: 1 (888) 4PTGLAB (1-888-478-4522) (toll free in USA), or 1(312) 455-8498 (outside USA)

E: [proteintech@ptglab.com](mailto:proteintech@ptglab.com)  
W: [ptglab.com](http://ptglab.com)

This product is exclusively available under Proteintech Group brand and is not available to purchase from any other manufacturer.

## Selected Validation Data



Jurkat cells were subjected to SDS PAGE followed by western blot with 20186-1-AP (BIN3 antibody) at dilution of 1:500 incubated at room temperature for 1.5 hours.