

For Research Use Only

STEAP2-Specific Polyclonal antibody



Catalog Number: 20201-1-AP

Featured Product

3 Publications

Basic Information

Catalog Number: 20201-1-AP	GenBank Accession Number: NM_152999	Purification Method: Antigen affinity purification
Size: 150ul , Concentration: 600 µg/ml by Nanodrop;	GeneID (NCBI): 261729	Recommended Dilutions: WB 1:500-1:1000
Source: Rabbit	Full Name: six transmembrane epithelial antigen of the prostate 2	
Isotype: IgG	Calculated MW: 56 kDa	
	Observed MW: 56 kDa	

Applications

Tested Applications: WB, ELISA	Positive Controls: WB : HEK-293 cells, HeLa cells, DU 145 cells, fetal human brain tissue, mouse kidney tissue
Cited Applications: IHC, WB	
Species Specificity: human, mouse	
Cited Species: human	

Background Information

STEAP2, also named as PCANAP1 and STAMP1, belongs to the STEAP family. It is a metalloenductase that has the ability to reduce both Fe³⁺ to Fe²⁺ and Cu²⁺ to Cu¹⁺. STEAP2 uses NAD⁺ as acceptor. The antibody is specific to STEAP2.

Notable Publications

Author	Pubmed ID	Journal	Application
Dong Zhang	36316642	Cancer Biol Ther	WB
Haruki Hasegawa	29940176	Exp Cell Res	WB
Yue Zhu	35436987	Cell Death Dis	WB,IHC

Storage

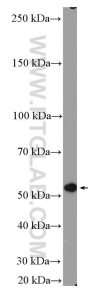
Storage:
Store at -20°C. Stable for one year after shipment.
Storage Buffer:
PBS with 0.02% sodium azide and 50% glycerol pH 7.3.
Aliquoting is unnecessary for -20°C storage

*** 20ul sizes contain 0.1% BSA

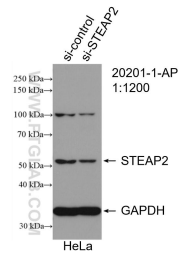
For technical support and original validation data for this product please contact:
T: 1 (888) 4PTGLAB (1-888-478-4522) (toll free in USA), or 1(312) 455-8498 (outside USA)
E: proteintech@ptglab.com
W: ptglab.com

This product is exclusively available under Proteintech Group brand and is not available to purchase from any other manufacturer.

Selected Validation Data



HEK-293 cells were subjected to SDS PAGE followed by western blot with 20201-1-AP (STEAP2-Specific antibody) at dilution of 1:600 incubated at room temperature for 1.5 hours.



WB result of STEAP2-Specific antibody (20201-1-AP; 1:600; incubated at room temperature for 1.5 hours) with sh-Control and sh-STEAP2-Specific transfected HeLa cells.