

For Research Use Only

STEAP2 Polyclonal antibody, PBS Only

Catalog Number: 20201-1-PBS

Featured Product



Basic Information

Catalog Number:

20201-1-PBS

Size:

100ug, Concentration: 1 mg/ml by Nanodrop;

Source:

Rabbit

Isotype:

IgG

GenBank Accession Number:

NM_152999

GeneID (NCBI):

261729

UNIPROT ID:

Q8NFT2

Full Name:

six transmembrane epithelial antigen of the prostate 2

Calculated MW:

56 kDa

Observed MW:

48-52 kDa

Purification Method:

Antigen affinity purification

Applications

Tested Applications:

WB, Indirect ELISA

Species Specificity:

human, mouse

Background Information

STEAP2, also named as PCANAP1 and STAMP1, belongs to the STEAP family. It is a metalloendopeptidase that has the ability to reduce both Fe³⁺ to Fe²⁺ and Cu²⁺ to Cu¹⁺. STEAP2 uses NAD⁺ as acceptor. The antibody is specific to STEAP2.

Storage

Storage:

Store at -80°C.

Storage Buffer:

PBS only, pH7.3

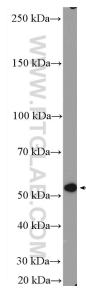
For technical support and original validation data for this product please contact:

T: 1 (888) 4PTGLAB (1-888-478-4522) (toll free in USA), or 1(312) 455-8498 (outside USA)

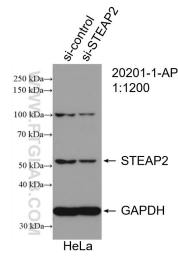
E: proteintech@ptglab.com
W: ptglab.com

This product is exclusively available under Proteintech Group brand and is not available to purchase from any other manufacturer.

Selected Validation Data



HEK-293 cells were subjected to SDS PAGE followed by western blot with 20201-1-AP (STEAP2-Specific antibody) at dilution of 1:600 incubated at room temperature for 1.5 hours. This data was developed using the same antibody clone with 20201-1-PBS in a different storage buffer formulation.



WB result of STEAP2-Specific antibody (20201-1-AP; 1:600; incubated at room temperature for 1.5 hours) with sh-Control and sh-STEAP2-Specific transfected HeLa cells. This data was developed using the same antibody clone with 20201-1-PBS in a different storage buffer formulation.