

For Research Use Only

POTEA-Specific Polyclonal antibody

Catalog Number: 20203-1-AP



Basic Information

Catalog Number: 20203-1-AP	GenBank Accession Number: NM_001002920	Purification Method: Antigen affinity purification
Size: 150ul , Concentration: 160 µg/ml by Bradford method using BSA as the standard;	GeneID (NCBI): 340441	Recommended Dilutions: IHC 1:50-1:500 IF 1:50-1:500
Source: Rabbit	Full Name: POTE ankyrin domain family, member A	
Isotype: IgG	Calculated MW: 56 kDa	

Applications

Tested Applications: IF, IHC, ELISA	Positive Controls: IHC : mouse ovary tissue, human ovary tissue IF : HepG2 cells,
Species Specificity: human, mouse	

Note-IHC: suggested antigen retrieval with TE buffer pH 9.0; (*) Alternatively, antigen retrieval may be performed with citrate buffer pH 6.0

Background Information

POTEA, also named as A26A1 and POTE8, belongs to the POTE family. POTE has an important signaling function in the reproductive system. The antibody is specific to POTEA.

Storage

Storage:
Store at -20°C. Stable for one year after shipment.
Storage Buffer:
PBS with 0.02% sodium azide and 50% glycerol pH 7.3.
Aliquoting is unnecessary for -20°C storage

*** 20ul sizes contain 0.1% BSA

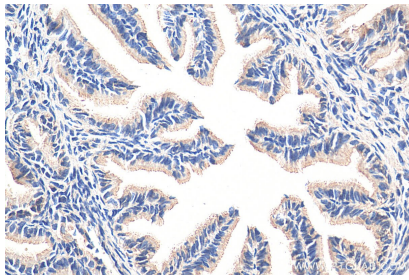
For technical support and original validation data for this product please contact:

T: 1 (888) 4PTGLAB (1-888-478-4522) (toll free in USA), or 1(312) 455-8498 (outside USA)

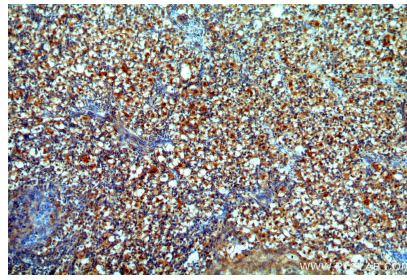
E: proteintech@ptglab.com
W: ptglab.com

This product is exclusively available under Proteintech Group brand and is not available to purchase from any other manufacturer.

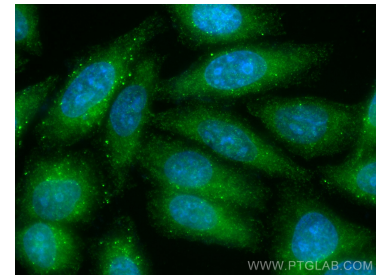
Selected Validation Data



Immunohistochemical analysis of paraffin-embedded mouse ovary tissue slide using 20203-1-AP (POTEA-Specific antibody) at dilution of 1:200 (under 40x lens). Heat mediated antigen retrieval with Tris-EDTA buffer (pH 9.0).



Immunohistochemical analysis of paraffin-embedded human ovary using 20203-1-AP (POTEA-Specific antibody) at dilution of 1:50 (under 10x lens).



Immunofluorescent analysis of (-20°C Methanol) fixed HepG2 cells using POTEA-Specific antibody (20203-1-AP) at dilution of 1:200 and CoraLite@488-Conjugated AffiniPure Goat Anti-Rabbit IgG(H+L).