

For Research Use Only

NARFL-Specific Polyclonal antibody

Catalog Number: 20209-1-AP

1 Publications



Basic Information

Catalog Number:

20209-1-AP

Size:

150ul , Concentration: 233 ug/ml by Bradford method using BSA as the standard;

Source:

Rabbit

Isotype:

IgG

GenBank Accession Number:

NM_022493

GeneID (NCBI):

64428

UNIPROT ID:

Q9H6Q4

Full Name:

nuclear prelamin A recognition factor-like

Calculated MW:

53 kDa

Observed MW:

26-28 kDa

Purification Method:

Antigen affinity purification

Recommended Dilutions:

WB 1:500-1:1000

IHC 1:20-1:200

Applications

Tested Applications:

WB, IHC, ELISA

Cited Applications:

WB

Species Specificity:

human

Cited Species:

human

Positive Controls:

WB : HeLa cells, HEK-293 cells

IHC : human kidney tissue, human heart tissue

Note-IHC: suggested antigen retrieval with TE buffer pH 9.0; (*) Alternatively, antigen retrieval may be performed with citrate buffer pH 6.0

Background Information

NARFL, also named as PRN and IOP1, belongs to the NARF family. NARFL is a component of the cytosolic iron-sulfur (Fe/S) protein assembly machinery. It is required for maturation of extramitochondrial Fe/S proteins. It seems to negatively regulate the level of HIF1A expression, although this effect could be indirect. [18270200], [16956324] The antibody is specific to NARFL.

Notable Publications

Author	Pubmed ID	Journal	Application
Monique Corbin	26456054	Free Radic Biol Med	WB

Storage

Storage:

Store at -20°C. Stable for one year after shipment.

Storage Buffer:

PBS with 0.02% sodium azide and 50% glycerol pH 7.3.

Aliquoting is unnecessary for -20°C storage

*** 20ul sizes contain 0.1% BSA

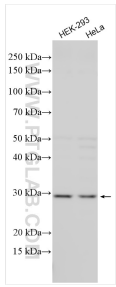
For technical support and original validation data for this product please contact:

T: 1 (888) 4PTGLAB (1-888-478-4522) (toll free in USA), or 1(312) 455-8498 (outside USA)

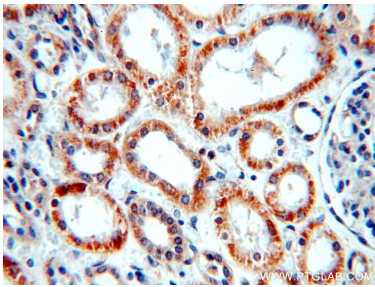
E: proteintech@ptglab.com
W: ptglab.com

This product is exclusively available under Proteintech Group brand and is not available to purchase from any other manufacturer.

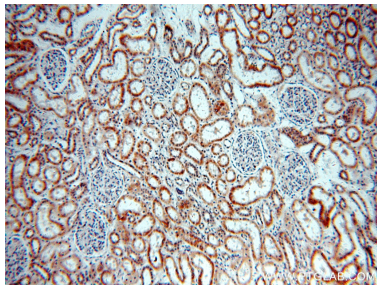
Selected Validation Data



Various lysates were subjected to SDS PAGE followed by western blot with 20209-1-AP (NARFL-Specific antibody) at dilution of 1:800 incubated at room temperature for 1.5 hours.



Immunohistochemical analysis of paraffin-embedded human kidney using 20209-1-AP (NARFL-Specific antibody) at dilution of 1:100 (under 40x lens).



Immunohistochemical analysis of paraffin-embedded human kidney using 20209-1-AP (NARFL-Specific antibody) at dilution of 1:100 (under 10x lens).