

For Research Use Only

# GPRIN3-Specific Polyclonal antibody

Catalog Number: 20212-1-AP

1 Publications



## Basic Information

Catalog Number:

20212-1-AP

Size:

150ul, Concentration: 333 ug/ml by Bradford method using BSA as the standard;

Source:

Rabbit

Isotype:

IgG

GenBank Accession Number:

NM\_198281

GeneID (NCBI):

285513

UNIPROT ID:

Q6ZVF9

Full Name:

GPRIN family member 3

Calculated MW:

82 kDa

Observed MW:

82 kDa

Purification Method:

Antigen affinity purification

Recommended Dilutions:

WB 1:500-1:1000

IHC 1:50-1:500

## Applications

Tested Applications:

WB, IHC, ELISA

Cited Applications:

WB

Species Specificity:

human, mouse, rat

Cited Species:

mouse

**Note-IHC: suggested antigen retrieval with TE buffer pH 9.0; (\*) Alternatively, antigen retrieval may be performed with citrate buffer pH 6.0**

Positive Controls:

WB : human brain tissue, mouse brain tissue

IHC : human stomach tissue,

## Background Information

GPRIN3, also named as KIAA2027, may be involved in neurite outgrowth. The antibody is specific to GPRIN3.

## Notable Publications

| Author               | Pubmed ID | Journal       | Application |
|----------------------|-----------|---------------|-------------|
| Daniel Heller-Trulli | 36519931  | Mol Cell Biol | WB          |

## Storage

Storage:

Store at -20°C. Stable for one year after shipment.

Storage Buffer:

PBS with 0.02% sodium azide and 50% glycerol pH 7.3.

Aliquoting is unnecessary for -20°C storage

\*\*\* 20ul sizes contain 0.1% BSA

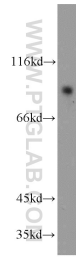
For technical support and original validation data for this product please contact:

T: 1 (888) 4PTGLAB (1-888-478-4522) (toll free in USA), or 1(312) 455-8498 (outside USA)

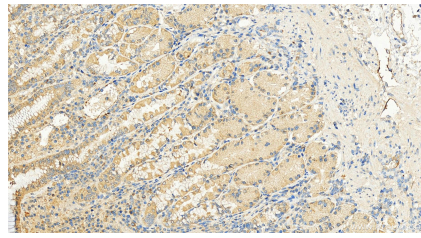
E: [proteintech@ptglab.com](mailto:proteintech@ptglab.com)  
W: [ptglab.com](http://ptglab.com)

This product is exclusively available under Proteintech Group brand and is not available to purchase from any other manufacturer.

## Selected Validation Data



human brain tissue were subjected to SDS PAGE followed by western blot with 20212-1-AP (GPRIN3-Specific antibody) at dilution of 1:300 incubated at room temperature for 1.5 hours.



Immunohistochemical analysis of paraffin-embedded human stomach tissue slide using 20212-1-AP (GPRIN3-Specific antibody) at dilution of 1:200 (under 20x lens). Heat mediated antigen retrieval with Tris-EDTA buffer (pH 9.0).