

For Research Use Only

GPR150-Specific Polyclonal antibody

Catalog Number: 20213-1-AP



Basic Information

| | | |
|--|---|---|
| Catalog Number: 20213-1-AP | GenBank Accession Number: NM_199243 | Purification Method: Antigen affinity purification |
| Size: 150ul , Concentration: 1100 ug/ml by Nanodrop; | GeneID (NCBI): 285601 | Recommended Dilutions: IHC 1:50-1:500 IF/ICC 1:200-1:800 |
| Source: Rabbit | UNIPROT ID: Q8NGU9 | |
| Isotype: IgG | Full Name: G protein-coupled receptor 150 | |
| | Calculated MW: 46 kDa | |

Applications

| | |
|---|---|
| Tested Applications: IHC, IF/ICC, ELISA | Positive Controls: IHC : mouse brain tissue, IF/ICC : SH-SY5Y cells, |
| Species Specificity: human | |

Note-IHC: suggested antigen retrieval with TE buffer pH 9.0; (*) Alternatively, antigen retrieval may be performed with citrate buffer pH 6.0

Background Information

GPR150 belongs to the G-protein coupled receptor 1 family. It is an orphan receptor. This antibody is specific to GPR150.

Storage

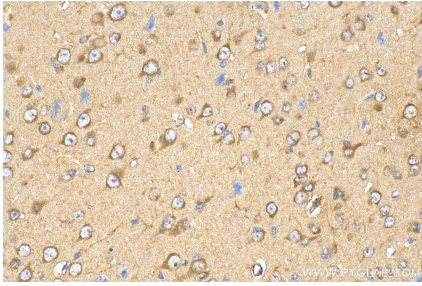
Storage:
Store at -20°C. Stable for one year after shipment.
Storage Buffer:
PBS with 0.02% sodium azide and 50% glycerol pH 7.3.
Aliquoting is unnecessary for -20°C storage

*** 20ul sizes contain 0.1% BSA

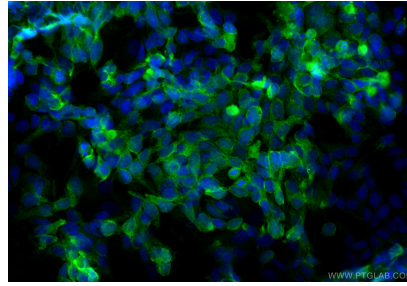
For technical support and original validation data for this product please contact:
T: 1 (888) 4PTGLAB (1-888-478-4522) (toll free in USA), or 1(312) 455-8498 (outside USA)
E: proteintech@ptglab.com
W: ptglab.com

This product is exclusively available under Proteintech Group brand and is not available to purchase from any other manufacturer.

Selected Validation Data



Immunohistochemical analysis of paraffin-embedded mouse brain tissue slide using 20213-1-AP (GPR150-Specific antibody) at dilution of 1:200 (under 40x lens). Heat mediated antigen retrieval with Tris-EDTA buffer (pH 9.0).



Immunofluorescent analysis of (4% PFA) fixed SH-SY5Y cells using GPR150-Specific antibody (20213-1-AP) at dilution of 1:400 and Multi-rAb CoraLite® Plus 488-Goat Anti-Rabbit Recombinant Secondary Antibody (H+L) (RGAR002).