

For Research Use Only

GPR150-Specific Polyclonal antibody, PBS Only

Catalog Number: 20213-1-PBS



Basic Information

Catalog Number:

20213-1-PBS

Size:

100ug, Concentration: 1 mg/ml by
Nanodrop;

Source:

Rabbit

Isotype:

IgG

GenBank Accession Number:

NM_199243

GeneID (NCBI):

285601

UNIPROT ID:

Q8NGU9

Full Name:

G protein-coupled receptor 150

Calculated MW:

46 kDa

Purification Method:

Antigen affinity purification

Applications

Tested Applications:

IHC, IF/ICC, Indirect ELISA

Species Specificity:

human

Background Information

GPR150 belongs to the G-protein coupled receptor 1 family. It is an orphan receptor. This antibody is specific to GPR150.

Storage

Storage:

Store at -80°C.

Storage Buffer:

PBS Only

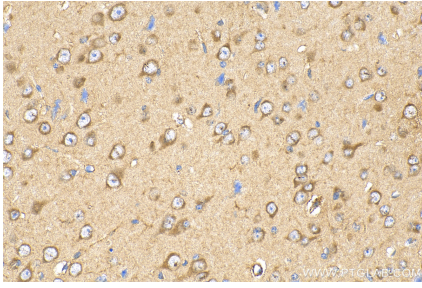
For technical support and original validation data for this product please contact:

T: 1 (888) 4PTGLAB (1-888-478-4522) (toll free
in USA), or 1(312) 455-8498 (outside USA)

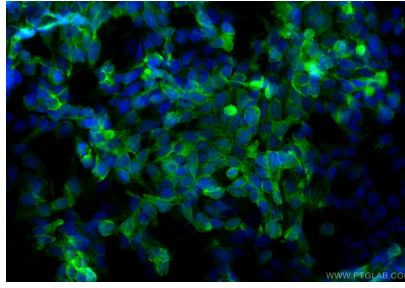
E: proteintech@ptglab.com
W: ptglab.com

This product is exclusively available under Proteintech Group brand and is not available to purchase from any other manufacturer.

Selected Validation Data



Immunohistochemical analysis of paraffin-embedded mouse brain tissue slide using 20213-1-AP (GPR150-Specific antibody) at dilution of 1:200 (under 40x lens). Heat mediated antigen retrieval with Tris-EDTA buffer (pH 9.0). This data was developed using the same antibody clone with 20213-1-PBS in a different storage buffer formulation.



Immunofluorescent analysis of (4% PFA) fixed SH-SY5Y cells using GPR150-Specific antibody (20213-1-AP) at dilution of 1:400 and Multi-rAb CoraLite® Plus 488-Goat Anti-Rabbit Recombinant Secondary Antibody (H+L) (RGAR002). This data was developed using the same antibody clone with 20213-1-PBS in a different storage buffer formulation.