

For Research Use Only

# IGF1A-Specific Polyclonal antibody

Catalog Number: 20214-1-AP

Featured Product

19 Publications



## Basic Information

<b>Catalog Number:</b> 20214-1-AP	<b>GenBank Accession Number:</b> GeneID (NCBI): 3479	<b>Purification Method:</b> Antigen affinity purification
<b>Size:</b> 150ul, Concentration: 380 µg/ml by Bradford method using BSA as the standard;	<b>Full Name:</b> insulin-like growth factor 1 (somatomedin C)	<b>Recommended Dilutions:</b> IHC 1:300-1:1200
<b>Source:</b> Rabbit	<b>Calculated MW:</b> 17 kDa	
<b>Isotype:</b> IgG		

## Applications

<b>Tested Applications:</b> IHC, ELISA	<b>Positive Controls:</b> IHC: mouse liver tissue, human liver cancer tissue
<b>Cited Applications:</b> IF, IHC, WB	
<b>Species Specificity:</b> human, mouse	
<b>Cited Species:</b> human, rat, mouse, pig	

**Note-IHC: suggested antigen retrieval with TE buffer pH 9.0; (\*) Alternatively, antigen retrieval may be performed with citrate buffer pH 6.0**

## Background Information

IGF1, also named as IBP1, MGF, IGF-IA and Somatomedin-C, belongs to the INS family. IGF1 is structurally and functionally related to INS but have a much higher growth-promoting activity. Altered expression or mutation of IGF-1 is associated with several human disorders, including type I diabetes and various forms of cancer. Defects in IGF1 are the cause of INS-like growth factor I deficiency (IGF1 deficiency) which is an autosomal recessive disorder characterized by growth retardation, sensorineural deafness and mental retardation. The antibody is specific to isoform IGF-1A.

## Notable Publications

Author	Pubmed ID	Journal	Application
Fan Wang	31559898	Cancer Biol Ther	WB
Anna Miyazaki	36114866	Histochem Cell Biol	WB
Yinxian Wen	25202993	PLoS One	WB, IHC

## Storage

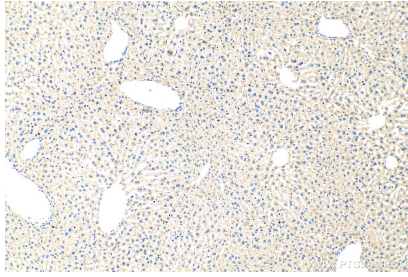
**Storage:**  
Store at -20°C. Stable for one year after shipment.  
**Storage Buffer:**  
PBS with 0.02% sodium azide and 50% glycerol pH 7.3.  
Aliquoting is unnecessary for -20°C storage

\*\*\* 20ul sizes contain 0.1% BSA

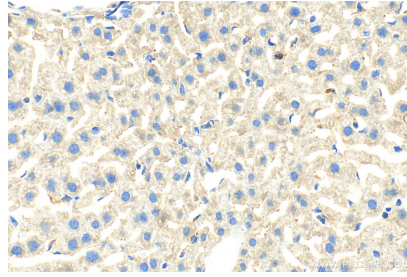
For technical support and original validation data for this product please contact:  
T: 1 (888) 4PTGLAB (1-888-478-4522) (toll free in USA), or 1(312) 455-8498 (outside USA)  
E: proteintech@ptglab.com  
W: ptglab.com

This product is exclusively available under Proteintech Group brand and is not available to purchase from any other manufacturer.

## Selected Validation Data



Immunohistochemical analysis of paraffin-embedded mouse liver tissue slide using 20214-1-AP (IGF1A-Specific antibody) at dilution of 1:600 (under 10x lens). Heat mediated antigen retrieval with Tris-EDTA buffer (pH 9.0).



Immunohistochemical analysis of paraffin-embedded mouse liver tissue slide using 20214-1-AP (IGF1A-Specific antibody) at dilution of 1:600 (under 40x lens). Heat mediated antigen retrieval with Tris-EDTA buffer (pH 9.0).