

For Research Use Only

# ROBO4-Specific Polyclonal antibody

Catalog Number: 20221-1-AP

3 Publications



## Basic Information

Catalog Number:

20221-1-AP

Size:

150ul, Concentration: 950 ug/ml by Nanodrop;

Source:

Rabbit

Isotype:

IgG

GenBank Accession Number:

NM\_019055

GeneID (NCBI):

54538

UNIPROT ID:

Q8WZ75

Full Name:

roundabout homolog 4, magic roundabout (Drosophila)

Calculated MW:

107 kDa

Observed MW:

90-170 kDa

Purification Method:

Antigen affinity purification

Recommended Dilutions:

WB 1:500-1:1000

## Applications

Tested Applications:

WB, ELISA

Cited Applications:

WB

Species Specificity:

human, mouse

Cited Species:

human, mouse

Positive Controls:

WB : HeLa cells, HepG2 cells

## Background Information

ROBO4 belongs to the immunoglobulin superfamily and ROBO family. It is a receptor for Slit proteins, at least for SLIT2, and seems to be involved in angiogenesis and vascular patterning. ROBO4 may mediate the inhibition of primary endothelial cell migration by Slit proteins. This antibody is specific to ROBO4.

## Notable Publications

Author	Pubmed ID	Journal	Application
Chunqing Yang	32464549	Mol Ther Nucleic Acids	WB
Seyram Yao Adzraku	36647012	Cell Mol Biol Lett	WB
Liangliang Zhao	37430272	J Transl Med	WB

## Storage

Storage:

Store at -20°C. Stable for one year after shipment.

Storage Buffer:

PBS with 0.02% sodium azide and 50% glycerol, pH7.3

Aliquoting is unnecessary for -20°C storage

\*\*\* 20ul sizes contain 0.1% BSA

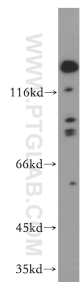
For technical support and original validation data for this product please contact:

T: 1 (888) 4PTGLAB (1-888-478-4522) (toll free in USA), or 1(312) 455-8498 (outside USA)

E: [proteintech@ptglab.com](mailto:proteintech@ptglab.com)  
W: [ptglab.com](http://ptglab.com)

This product is exclusively available under Proteintech Group brand and is not available to purchase from any other manufacturer.

# Selected Validation Data



HeLa cells were subjected to SDS PAGE followed by western blot with 20221-1-AP (ROBO4-Specific antibody) at dilution of 1:300 incubated at room temperature for 1.5 hours.