

For Research Use Only

ARF1 Polyclonal antibody

Catalog Number: 20226-1-AP

Featured Product

8 Publications



Basic Information

Catalog Number:

20226-1-AP

Size:

150ul, Concentration: 350 ug/ml by Nanodrop and 320 ug/ml by Bradford method using BSA as the standard;

Source:

Rabbit

Isotype:

IgG

GenBank Accession Number:

NM_001658

GeneID (NCBI):

375

UNIPROT ID:

P84077

Full Name:

ADP-ribosylation factor 1

Calculated MW:

21 kDa

Observed MW:

18-21 kDa

Purification Method:

Antigen affinity purification

Recommended Dilutions:

WB 1:1000-1:4000

IP 0.5-4.0 ug for 1.0-3.0 mg of total protein lysate

IHC 1:50-1:500

IF/ICC 1:50-1:500

Applications

Tested Applications:

WB, IHC, IF/ICC, FC (Intra), IP, ELISA

Cited Applications:

WB, IF, IP, ColP

Species Specificity:

human, mouse

Cited Species:

human, mouse

Note-IHC: suggested antigen retrieval with TE buffer pH 9.0; (*) Alternatively, antigen retrieval may be performed with citrate buffer pH 6.0

Positive Controls:

WB: DU 145 cells, HEK-293 cells, HeLa cells, HepG2 cells, mouse brain tissue, SKOV-3 cells, MDA-MB-231 cells

IP: HeLa cells,

IHC: human breast cancer tissue, human brain tissue, human colon cancer tissue, human liver tissue

IF/ICC: HepG2 cells,

Background Information

ADP-ribosylation factors (ARFs) are members of the ARF family of GTP-binding proteins of the Ras superfamily, with 20kda protein size. ARFs bind and regulate GTP/GDP cycle by alternating between the active GTP-bound and inactive GDP-bound conformations. ARF family proteins are essential and ubiquitous in eukaryotes. Six highly conserved members of the family have been identified in mammalian cells. They function in vesicular traffic and actin remodelling and other bioprocesses in cells. The ARF1 protein is localized to the Golgi apparatus and has a central role in intra-Golgi transport. It mainly functions in coat recruitment.(PMID: 7759471, PMID: 16042562). The antibody is specific to ARF1.

Notable Publications

Author	Pubmed ID	Journal	Application
Tao Wang	28985237	PLoS Pathog	WB
Yuanyuan Su	29420297	J Cell Sci	WB,IF
Miwa Sasai	28604719	Nat Immunol	WB

Storage

Storage:

Store at -20°C. Stable for one year after shipment.

Storage Buffer:

PBS with 0.02% sodium azide and 50% glycerol pH 7.3.

Aliquoting is unnecessary for -20°C storage

*** 20ul sizes contain 0.1% BSA

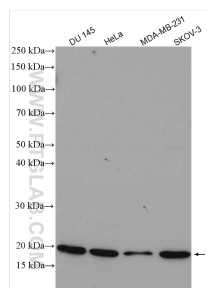
For technical support and original validation data for this product please contact:

T: 1 (888) 4PTGLAB (1-888-478-4522) (toll free in USA), or 1(312) 455-8498 (outside USA)

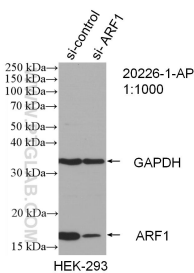
E: proteintech@ptglab.com
W: ptglab.com

This product is exclusively available under Proteintech Group brand and is not available to purchase from any other manufacturer.

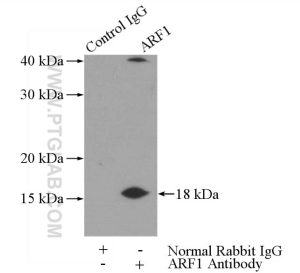
Selected Validation Data



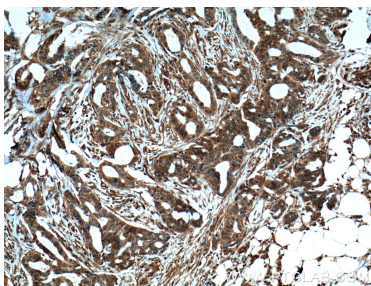
Various lysates were subjected to SDS PAGE followed by western blot with 20226-1-AP (ARF1 antibody) at dilution of 1:2000 incubated at room temperature for 1.5 hours.



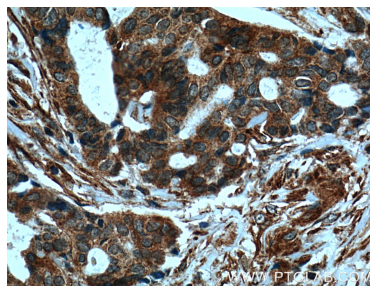
WB result of ARF1 antibody (20226-1-AP; 1:1000; incubated at room temperature for 1.5 hours) with sh-Control and sh-ARF1 transfected HEK-293 cells.



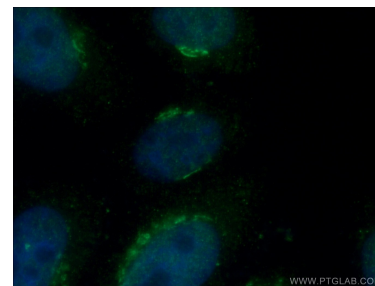
IP result of anti-ARF1 (IP:20226-1-AP, 3ug; Detection:20226-1-AP 1:600) with HeLa cells lysate 2440ug.



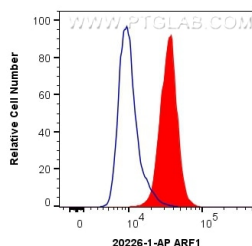
Immunohistochemical analysis of paraffin-embedded human breast cancer tissue slide using 20226-1-AP (ARF1 Antibody) at dilution of 1:200 (under 10x lens). Heat mediated antigen retrieval with Tris-EDTA buffer (pH 9.0).



Immunohistochemical analysis of paraffin-embedded human breast cancer tissue slide using 20226-1-AP (ARF1 Antibody) at dilution of 1:200 (under 40x lens). Heat mediated antigen retrieval with Tris-EDTA buffer (pH 9.0).



Immunofluorescent analysis of (4% PFA) fixed HepG2 cells using 20226-1-AP (ARF1 antibody) at dilution of 1:50 and Alexa Fluor 488-conjugated Goat Anti-Rabbit IgG(H+L).



1X10⁶ HeLa cells were intracellularly stained with 0.4 ug Anti-Human ARF1 (20226-1-AP) and CoraLite®488-Conjugated Goat Anti-Rabbit IgG(H+L) at dilution 1:1000 (red), or 0.4 ug Control Antibody. Cells were fixed with 4% PFA and permeabilized with Flow Cytometry Perm Buffer (PF00011-C).