

# ITGA6X1A Polyclonal antibody

Catalog Number: 20231-1-AP

## Basic Information

**Catalog Number:**

20231-1-AP

**Size:**

150ul , Concentration: 173 µg/ml by Bradford method using BSA as the standard;

**Source:**

Rabbit

**Isotype:**

IgG

**GenBank Accession Number:**

NM\_000210

**GeneID (NCBI):**

3655

**UNIPROT ID:**

P23229

**Full Name:**

integrin, alpha 6

**Calculated MW:**

127 kDa

**Observed MW:**

100 kDa, 150 kDa

**Purification Method:**

Antigen affinity purification

**Recommended Dilutions:**

WB 1:200-1:1000

## Applications

**Tested Applications:**

WB, ELISA

**Species Specificity:**

human, mouse

**Positive Controls:**

WB : mouse spleen tissue, mouse colon tissue

## Background Information

ITGA6, also named as CD49f and VLA-6, belongs to the integrin alpha chain family. It is a receptor for laminin on platelets. ITGA6 is a receptor for laminin in epithelial cells and it plays a critical structural role in the hemidesmosome. Defects in ITGA6 are a cause of epidermolysis bullosa letalis with pyloric atresia (EB-PA) which also known as junctional epidermolysis bullosa with pyloric atresia (PA-JEB) or aplasia cutis congenita with gastrointestinal atresia. The antibody is specific to isoform Alpha-6X1A, isoform Alpha-6X2A, isoform Alpha-6X1X2A isoform7 and isoform9 of ITGA6.

## Storage

**Storage:**

Store at -20°C. Stable for one year after shipment.

**Storage Buffer:**

PBS with 0.02% sodium azide and 50% glycerol pH 7.3.

Aliquoting is unnecessary for -20°C storage

\*\*\* 20ul sizes contain 0.1% BSA

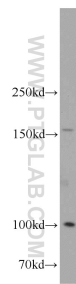
For technical support and original validation data for this product please contact:

T: 1 (888) 4PTGLAB (1-888-478-4522) (toll free in USA), or 1(312) 455-8498 (outside USA)

E: [proteintech@ptglab.com](mailto:proteintech@ptglab.com)  
W: [ptglab.com](http://ptglab.com)

This product is exclusively available under Proteintech Group brand and is not available to purchase from any other manufacturer.

## Selected Validation Data



mouse spleen tissue were subjected to SDS PAGE followed by western blot with 20231-1-AP (ITGA6-Specific antibody) at dilution of 1:300 incubated at room temperature for 1.5 hours.