

For Research Use Only

ITGA6X1B Polyclonal antibody

Catalog Number: 20232-1-AP

1 Publications



Basic Information

Catalog Number: 20232-1-AP	GenBank Accession Number: NM_001079818	Purification Method: Antigen affinity purification
Size: 150ul , Concentration: 333 µg/ml by Bradford method using BSA as the standard;	GeneID (NCBI): 3655	Recommended Dilutions: WB 1:500-1:3000
Source: Rabbit	Full Name: integrin, alpha 6	
Isotype: IgG	Calculated MW: 127 kDa	
	Observed MW: 62 kDa	

Applications

Tested Applications: WB, ELISA	Positive Controls: WB : mouse heart tissue, mouse kidney tissue
Cited Applications: IF, WB	
Species Specificity: human, mouse, rat	
Cited Species: rat	

Background Information

ITGA6, also named as ITGA6B, CD49f and VLA-6, belongs to the integrin alpha chain family. It is a receptor for laminin on platelets. ITGA6 is a receptor for laminin in epithelial cells and it plays a critical structural role in the hemidesmosome. Defects in ITGA6 are a cause of epidermolysis bullosa letalis with pyloric atresia (EB-PA) which also known as junctional epidermolysis bullosa with pyloric atresia (JA-EB) or aplasia cutis congenita with gastrointestinal atresia. This antibody is specific to isoform Alpha-6X1X2B, isoform Alpha-6X1B and isoform Alpha-6X2B.

Notable Publications

Author	Pubmed ID	Journal	Application
Jing Li	27344201	J Biomech	WB, IF

Storage

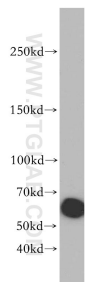
Storage:
Store at -20°C. Stable for one year after shipment.
Storage Buffer:
PBS with 0.02% sodium azide and 50% glycerol pH 7.3.
Aliquoting is unnecessary for -20°C storage

*** 20ul sizes contain 0.1% BSA

For technical support and original validation data for this product please contact:
T: 1 (888) 4PTGLAB (1-888-478-4522) (toll free in USA), or 1(312) 455-8498 (outside USA)
E: proteintech@ptglab.com
W: ptglab.com

This product is exclusively available under Proteintech Group brand and is not available to purchase from any other manufacturer.

Selected Validation Data



mouse heart tissue were subjected to SDS PAGE followed by western blot with 20232-1-AP (ITGA6-Specific antibody) at dilution of 1:300 incubated at room temperature for 1.5 hours.