

For Research Use Only

TOP2A-Specific Polyclonal antibody

Catalog Number: 20233-1-AP

Featured Product

20 Publications



Basic Information

Catalog Number:

20233-1-AP

Size:

150ul, Concentration: 800 ug/ml by Nanodrop;

Source:

Rabbit

Isotype:

IgG

GenBank Accession Number:

NM_001067

GeneID (NCBI):

7153

UNIPROT ID:

P11388

Full Name:

topoisomerase (DNA) II alpha 170kDa

Calculated MW:

174 kDa

Observed MW:

170-177 kDa

Purification Method:

Antigen affinity purification

Recommended Dilutions:

WB 1:2000-1:16000

IP 0.5-4.0 ug for 1.0-3.0 mg of total protein lysate

IHC 1:200-1:800

Applications

Tested Applications:

WB, IHC, IP, ELISA

Cited Applications:

WB, IHC, IF

Species Specificity:

human

Cited Species:

human, mouse

Positive Controls:

WB : HeLa cells, HepG2 cells, L02 cells

IP : L02 cells,

IHC : human ovary cancer tissue,

Note-IHC: suggested antigen retrieval with TE buffer pH 9.0; (*) Alternatively, antigen retrieval may be performed with citrate buffer pH 6.0

Background Information

TOP2A, also named as TOP2, belongs to the type II topoisomerase family. Topoisomerase II makes double-strand breaks. TOP2 control the topological states of DNA by transient breakage and subsequent rejoining of DNA strands. TOP2A may play a role in regulating the period length of ARNTL/BMAL1 transcriptional oscillation. DNA topoisomerase IIa (170 kDa, TOP2a/170) is essential in proliferating cells by resolving DNA topological entanglements during chromosome condensation, replication, and segregation.

Notable Publications

Author	Pubmed ID	Journal	Application
Yi Fang	31662984	Biomed Res Int	WB
Xuefeng Li	25237769	Oncotarget	WB
Carlo Cattrini	33091733	Cancer Treat Res Commun	WB

Storage

Storage:

Store at -20°C. Stable for one year after shipment.

Storage Buffer:

PBS with 0.02% sodium azide and 50% glycerol pH 7.3.

Aliquoting is unnecessary for -20°C storage

*** 20ul sizes contain 0.1% BSA

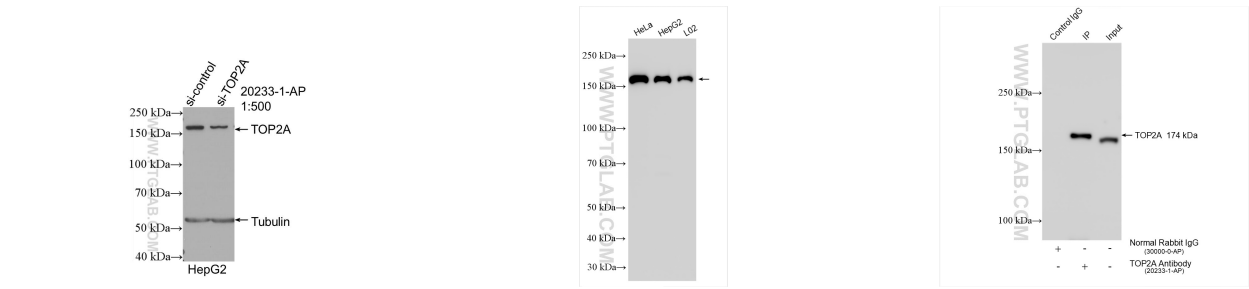
For technical support and original validation data for this product please contact:

T: 1 (888) 4PTGLAB (1-888-478-4522) (toll free in USA), or 1(312) 455-8498 (outside USA)

E: proteintech@ptglab.com
W: ptglab.com

This product is exclusively available under Proteintech Group brand and is not available to purchase from any other manufacturer.

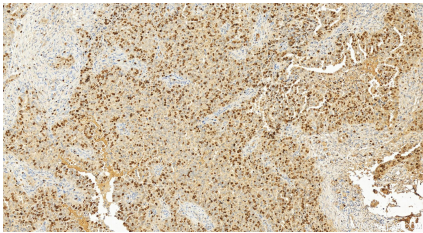
Selected Validation Data



WB result of TOP2A-Specific antibody (20233-1-AP; 1:500; incubated at room temperature for 1.5 hours) with sh-Control and sh-TOP2A-Specific transfected HepG2 cells.

Various lysates were subjected to SDS PAGE followed by western blot with 20233-1-AP (TOP2A-Specific antibody) at dilution of 1:8000 incubated at room temperature for 1.5 hours.

IP result of anti-TOP2A-Specific (IP:20233-1-AP, 4ug; Detection:20233-1-AP 1:8000) with L02 cells lysate 1040 ug.



Immunohistochemical analysis of paraffin-embedded human ovary cancer tissue slide using 20233-1-AP (TOP2A-Specific antibody) at dilution of 1:400 (under 20x lens). Heat mediated antigen retrieval with Tris-EDTA buffer (pH 9.0).