

For Research Use Only

YES1-Specific Polyclonal antibody

Catalog Number: 20243-1-AP

Featured Product

6 Publications



Basic Information

Catalog Number:

20243-1-AP

Size:

150ul, Concentration: 1000 ug/ml by Nanodrop;

Source:

Rabbit

Isotype:

IgG

GenBank Accession Number:

NM_005433

GeneID (NCBI):

7525

UNIPROT ID:

P07947

Full Name:

v-yes-1 Yamaguchi sarcoma viral oncogene homolog 1

Calculated MW:

61 kDa

Observed MW:

61 kDa

Purification Method:

Antigen affinity purification

Recommended Dilutions:

WB 1:500-1:1000

IP 0.5-4.0 ug for 1.0-3.0 mg of total protein lysate

IHC 1:50-1:500

Applications

Tested Applications:

IP, IHC, ELISA

Cited Applications:

IHC

Species Specificity:

human

Cited Species:

human, mouse

Positive Controls:

WB : A431 cells, HepG2 cells, A549 cells, DU 145 cells, HEK-293 cells

IP : A549 cells,

IHC : human lung cancer tissue, human colon cancer tissue

Note-IHC: suggested antigen retrieval with TE buffer pH 9.0; (*) Alternatively, antigen retrieval may be performed with citrate buffer pH 6.0

Background Information

YES1, also named as p61-Yes and YES, belongs to the protein kinase superfamily, Tyr protein kinase family and SRC subfamily. It promotes infectivity of *Neisseria gonorrhoeae* in epithelial cells by phosphorylating MCP/CD46. YES1 catalyzes the reaction: ATP + a [protein]-L-tyrosine = ADP + a [protein]-L-tyrosine phosphate. The antibody is specific to YES1.

Notable Publications

Author	Pubmed ID	Journal	Application
Jackson A Roberts	34757788	Sci Adv	
Esther Redin	33658304	J Immunother Cancer	IHC
Iratí Garmendia	31166114	Am J Respir Crit Care Med	IHC

Storage

Storage:

Store at -20°C. Stable for one year after shipment.

Storage Buffer:

PBS with 0.02% sodium azide and 50% glycerol pH 7.3.

Aliquoting is unnecessary for -20°C storage

*** 20ul sizes contain 0.1% BSA

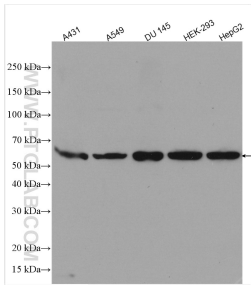
For technical support and original validation data for this product please contact:

T: 1 (888) 4PTGLAB (1-888-478-4522) (toll free in USA), or 1(312) 455-8498 (outside USA)

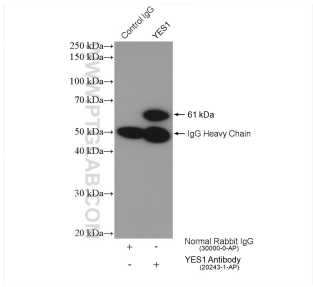
E: proteintech@ptglab.com
W: ptglab.com

This product is exclusively available under Proteintech Group brand and is not available to purchase from any other manufacturer.

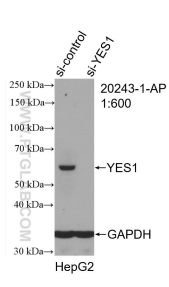
Selected Validation Data



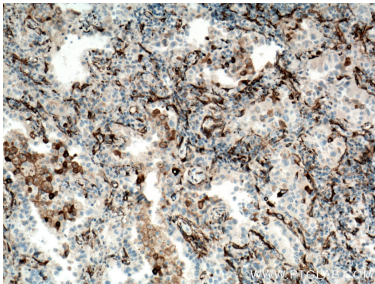
Various lysates were subjected to SDS PAGE followed by western blot with 20243-1-AP (YES1-Specific antibody) at dilution of 1:600 incubated at room temperature for 1.5 hours.



IP result of anti-YES1-Specific (IP:20243-1-AP, 4ug; Detection:20243-1-AP 1:500) with A549 cells lysate 1400 ug.



WB result of YES1-Specific antibody (20243-1-AP; 1:600; incubated at room temperature for 1.5 hours) with sh-Control and sh-YES1-Specific transfected HepG2 cells.



Immunohistochemical analysis of paraffin-embedded human lung cancer tissue slide using 20243-1-AP (YES1-Specific antibody) at dilution of 1:100 (under 10x lens. Heat mediated antigen retrieval with Tris-EDTA buffer (pH 9.0).