

For Research Use Only

YES1-Specific Polyclonal antibody, PBS Only

Catalog Number: 20243-1-PBS

Featured Product



Basic Information

Catalog Number:

20243-1-PBS

Size:

100ug, Concentration: 1 mg/ml by Nanodrop;

Source:

Rabbit

Isotype:

IgG

GenBank Accession Number:

NM_005433

GeneID (NCBI):

7525

UNIPROT ID:

P07947

Full Name:

v-yes-1 Yamaguchi sarcoma viral oncogene homolog 1

Calculated MW:

61 kDa

Observed MW:

61 kDa

Purification Method:

Antigen affinity purification

Applications

Tested Applications:

WB, IHC, IP, Indirect ELISA

Species Specificity:

human, mouse, rat

Background Information

YES1, also named as p61-Yes and YES, belongs to the protein kinase superfamily, Tyr protein kinase family and SRC subfamily. It promotes infectivity of *Neisseria gonorrhoeae* in epithelial cells by phosphorylating MCP/CD46. YES1 catalyzes the reaction: $ATP + a \text{ [protein]-L-tyrosine} = ADP + a \text{ [protein]-L-tyrosine phosphate}$. The antibody is specific to YES1.

Storage

Storage:

Store at -80°C.

Storage Buffer:

PBS only, pH7.3

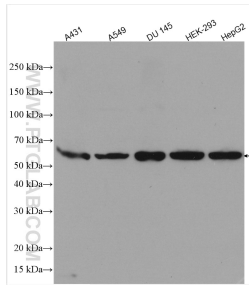
For technical support and original validation data for this product please contact:

T: 1 (888) 4PTGLAB (1-888-478-4522) (toll free in USA), or 1(312) 455-8498 (outside USA)

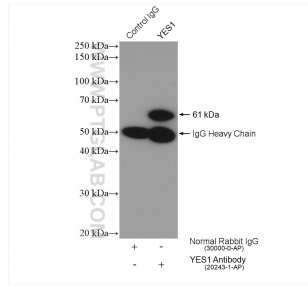
E: proteintech@ptglab.com
W: ptglab.com

This product is exclusively available under Proteintech Group brand and is not available to purchase from any other manufacturer.

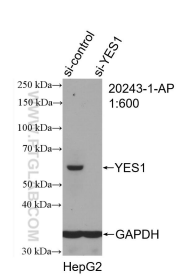
Selected Validation Data



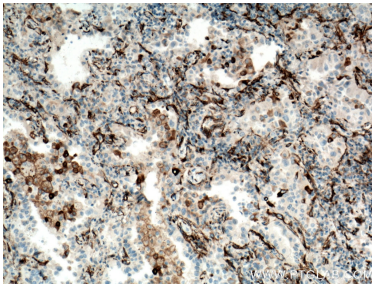
Various lysates were subjected to SDS PAGE followed by western blot with 20243-1-AP (YES1-Specific antibody) at dilution of 1:600 incubated at room temperature for 1.5 hours. This data was developed using the same antibody clone with 20243-1-PBS in a different storage buffer formulation.



IP result of anti-YES1-Specific (IP:20243-1-AP, 4ug; Detection:20243-1-AP 1:500) with A549 cells lysate 1400 ug. This data was developed using the same antibody clone with 20243-1-PBS in a different storage buffer formulation.



WB result of YES1-Specific antibody (20243-1-AP; 1:600; incubated at room temperature for 1.5 hours) with sh-Control and sh-YES1-Specific transfected HepG2 cells. This data was developed using the same antibody clone with 20243-1-PBS in a different storage buffer formulation.



Immunohistochemical analysis of paraffin-embedded human lung cancer tissue slide using 20243-1-AP (YES1-Specific antibody) at dilution of 1:100 (under 10x lens. Heat mediated antigen retrieval with Tris-EDTA buffer (pH 9.0). This data was developed using the same antibody clone with 20243-1-PBS in a different storage buffer formulation.