

For Research Use Only

DOCK2-Specific Polyclonal antibody

Catalog Number: 20245-1-AP



Basic Information

Catalog Number: 20245-1-AP	GenBank Accession Number: NM_004946	Purification Method: Antigen affinity purification
Size: 150ul , Concentration: 140 µg/ml by Bradford method using BSA as the standard;	GeneID (NCBI): 1794	
Source: Rabbit	Full Name: dedicator of cytokinesis 2	
Isotype: IgG	Calculated MW: 212 kDa	

Applications

Tested Applications:
IF, IHC, ELISA

Species Specificity:
human

Background Information

DOCK2, also named as KIAA0209, belongs to the DOCK family. It is involved in cytoskeletal rearrangements required for lymphocyte migration in response of chemokines. DOCK2 activates RAC1 and RAC2 small GTPases, probably by functioning as a guanine nucleotide exchange factor (GEF), which exchanges bound GDP for free GTP. DOCK2 may also participate in IL2 transcriptional activation via the activation of RAC2. The antibody is specific to DOCK2.

Storage

Storage:
Store at -20°C. Stable for one year after shipment.

Storage Buffer:
PBS with 0.02% sodium azide and 50% glycerol pH 7.3.

Aliquoting is unnecessary for -20°C storage

*** 20ul sizes contain 0.1% BSA

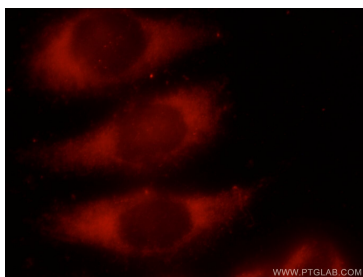
For technical support and original validation data for this product please contact:

T: 1 (888) 4PTGLAB (1-888-478-4522) (toll free in USA), or 1(312) 455-8498 (outside USA)

E: proteintech@ptglab.com
W: ptglab.com

This product is exclusively available under Proteintech Group brand and is not available to purchase from any other manufacturer.

Selected Validation Data



Immunofluorescent analysis of HeLa cells using 20245-1-AP (DOCK2-Specific antibody) at dilution of 1:25 and Rhodamine-Goat anti-Rabbit IgG.