

For Research Use Only

Neogenin-Specific Polyclonal antibody



Catalog Number: 20246-1-AP **4 Publications**

Basic Information

Catalog Number: 20246-1-AP	GenBank Accession Number: NM_002499	Purification Method: Antigen affinity purification
Size: 150ul , Concentration: 600 µg/ml by Nanodrop and 193 µg/ml by Bradford method using BSA as the standard;	GeneID (NCBI): 4756	Recommended Dilutions: WB 1:5000-1:50000
Source: Rabbit	Full Name: neogenin homolog 1 (chicken)	
Isotype: IgG	Calculated MW: 160 kDa	
	Observed MW: 180 kDa	

Applications

Tested Applications: WB, ELISA	Positive Controls: WB : Jurkat cells, Neuro-2a cells, mouse brain tissue, rat brain tissue
Cited Applications: ELISA, IHC, WB	
Species Specificity: human, mouse, rat	
Cited Species: human, rat	

Background Information

NEO1, also named as IGDC2 and NGN, belongs to the immunoglobulin superfamily and DCC family. NEO1 may be involved as a regulatory protein in the transition of undifferentiated proliferating cells to their differentiated state. NEO1 may also function as a cell adhesion molecule in a broad spectrum of embryonic and adult tissues. This antibody is specific to NEO1.

Notable Publications

Author	Pubmed ID	Journal	Application
Ru Zheng	27742864	Reproduction	IHC
Junwen Wang	35966013	Front Mol Neurosci	WB
Ann-Muriel Steff	31951765	Hum Vaccin Immunother	ELISA

Storage

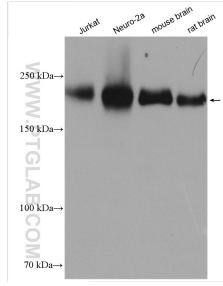
Storage:
Store at -20°C. Stable for one year after shipment.
Storage Buffer:
PBS with 0.02% sodium azide and 50% glycerol pH 7.3.
Aliquoting is unnecessary for -20°C storage

*** 20ul sizes contain 0.1% BSA

For technical support and original validation data for this product please contact:
T: 1 (888) 4PTGLAB (1-888-478-4522) (toll free in USA), or 1(312) 455-8498 (outside USA)
E: proteintech@ptglab.com
W: ptglab.com

This product is exclusively available under Proteintech Group brand and is not available to purchase from any other manufacturer.

Selected Validation Data



Various lysates were subjected to SDS PAGE followed by western blot with 20246-1-AP (Neogenin-Specific antibody) at dilution of 1:20000 incubated at room temperature for 1.5 hours.