

For Research Use Only

# ROCK2-Specific(C-term) Polyclonal antibody



Catalog Number:20248-1-AP

Featured Product

17 Publications

## Basic Information

<b>Catalog Number:</b> 20248-1-AP	<b>GenBank Accession Number:</b> NM_004850	<b>Purification Method:</b> Antigen affinity purification
<b>Size:</b> 150ul , Concentration: 400 µg/ml by Nanodrop and 347 µg/ml by Bradford method using BSA as the standard;	<b>GeneID (NCBI):</b> 9475	<b>Recommended Dilutions:</b> WB 1:200-1:1000 IHC 1:20-1:200 IF 1:10-1:100
<b>Source:</b> Rabbit	<b>Full Name:</b> Rho-associated, coiled-coil containing protein kinase 2	
<b>Isotype:</b> IgG	<b>Calculated MW:</b> 161 kDa	
	<b>Observed MW:</b> 164 kDa	

## Applications

<b>Tested Applications:</b> IF, IHC, WB,ELISA	<b>Positive Controls:</b>
<b>Cited Applications:</b> IF, IHC, WB	<b>WB :</b> HeLa cells, mouse brain tissue, rat brain tissue
<b>Species Specificity:</b> human, mouse, rat	<b>IHC :</b> human colon tissue, human brain tissue
<b>Cited Species:</b> human, rat, mouse	<b>IF :</b> HepG2 cells,

**Note-IHC: suggested antigen retrieval with TE buffer pH 9.0; (\*) Alternatively, antigen retrieval may be performed with citrate buffer pH 6.0**

## Background Information

ROCK2 is a serine/threonine kinase that regulates cytokinesis, smooth muscle contraction, the formation of actin stress fibers and focal adhesions, and the activation of the c-fos serum response element. It is an isozyme of ROCK1, is a target for the small GTPase Rho. ROCK2 is localized in both cytoplasm and nucleus, and the nucleus-localized ROCK2 can target p300 for phosphorylation to regulate its acetyltransferase activity (PMID:16574662).This antibody is specific to ROCK2.

## Notable Publications

Author	Pubmed ID	Journal	Application
Jiong Yue	27637803	Exp Neurol	WB,IHC,IF
Jiong Yue	31495513	Brain Dev	WB,IHC
Lixing Xu	31145906	Neuropharmacology	IF

## Storage

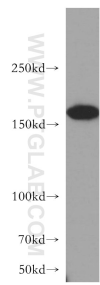
**Storage:**  
Store at -20°C. Stable for one year after shipment.  
**Storage Buffer:**  
PBS with 0.02% sodium azide and 50% glycerol pH 7.3.  
Aliquoting is unnecessary for -20°C storage

\*\*\* 20ul sizes contain 0.1% BSA

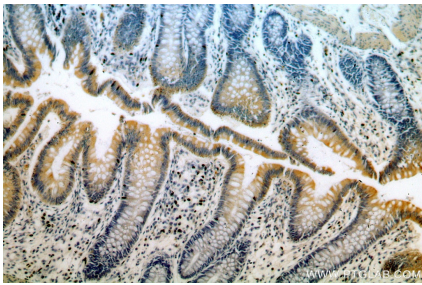
For technical support and original validation data for this product please contact:  
T: 1 (888) 4PTGLAB (1-888-478-4522) (toll free in USA), or 1(312) 455-8498 (outside USA)  
E: proteintech@ptglab.com  
W: ptglab.com

This product is exclusively available under Proteintech Group brand and is not available to purchase from any other manufacturer.

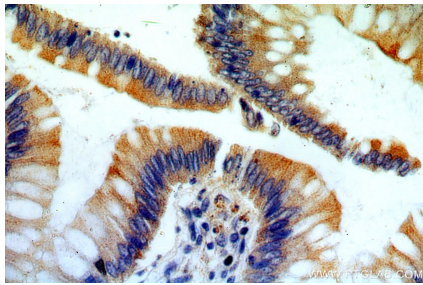
## Selected Validation Data



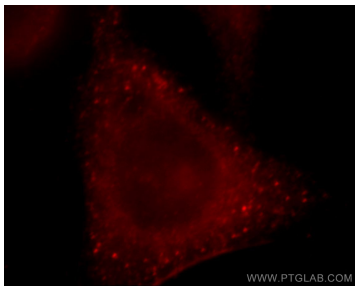
HeLa cells were subjected to SDS PAGE followed by western blot with 20248-1-AP (ROCK2-Specific(C-term) antibody) at dilution of 1:400 incubated at room temperature for 1.5 hours.



Immunohistochemical analysis of paraffin-embedded human colon using 20248-1-AP (ROCK2-Specific(C-term) antibody) at dilution of 1:100 (under 10x lens).



Immunohistochemical analysis of paraffin-embedded human colon using 20248-1-AP (ROCK2-Specific(C-term) antibody) at dilution of 1:100 (under 40x lens).



Immunofluorescent analysis of HepG2 cells, using ROCK2 antibody 20248-1-AP at 1:25 dilution and Rhodamine-labeled goat anti-rabbit IgG (red).